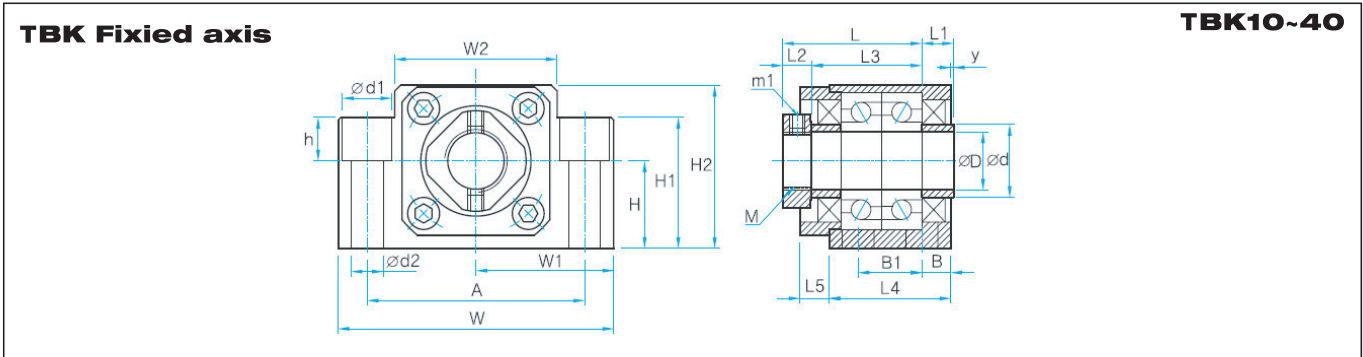


# Support Unit



TBK Block Type | TEK Block Type | TAK Block Type | TFK Block Type  
TBF Block Type | TEF Block Type | TAF Block Type | TFF Block Type  
Lock nut | Color Type





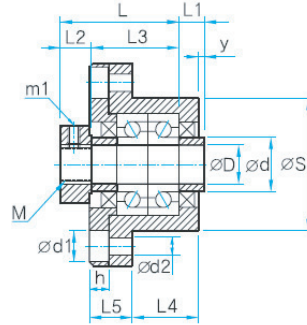
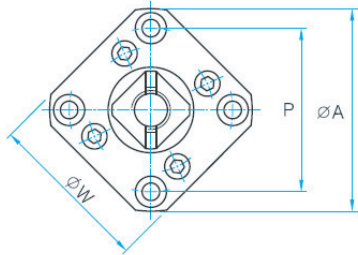
형번 Model	내경 Internal Diameter	칼라 외경 Outer Diameter of Color	블록 넓이 Width of Block	중심 넓이 Width of Center $\pm 0,02$	머리 넓이 Width of Head	중심 높이 Height of Center	어깨 높이 Height of Shoulder $\pm 0,02$	블록 높이 Height of Block	길이 Length	측단 칼라 길이 Length of Side Color	로크 너트 두께 Thickness of Lock nut		블록 길이 Length of Block	누름판 두께 Thickness of Pushing plate
	$\phi D$	$\phi d$	W	W1	W2	H	H1	H2	L	L1	L2	L3	L4	L5
TBK 10	10	14	60	30	34	22	32,5	39	29	7	8	21	25	6
TBK 12	12	15,3	60	30	35	25	35	43	29,5	7	8	21,5	25	6
TBK 15	15	19,5	70	35	40	28	38	48	33	7	8	25	27	6
TBK 17	17	21	86	43	50	39	55	64	43	9/12	10	33	35	8
TBK 20	20	24,5	88	44	52	34	50	60	43	9	10	33	35	8
TBK 25	25	30,5	106	53	64	48	70	80	52	10	12	40	42	12
TBK 30	30	36,5	128	64	76	51	78	89	55	11	12	43	45	14
TBK 35	35	38,5	140	70	88	52	79	96	63	12	17	46	50	14
TBK 40	40	48	160	80	100	60	90	110	71	16	19	52	61	18

형번 Model	장착 치수 Fixture Dimension			장착 구멍 치수 Fixture Hole Dimension			정면 장착 구멍 치수 Front Fixture Hole Dimension		로크너트 Lock nut	로크너트 고정나사 Lock nut Fixture Screw	기본 중정 격 하중 Regular load Capacity	한계 하중 Limit load Capacity	강성 Stengthness	사용 베어링 Bearing Type
	A	B	B1	$\phi d1$	$\phi d2$	h	x	c	Mx(피치)	m1	kgf	kgf	kg f/ $\mu m$	BRG
TBK 10	46	6	13	11	6,6	5	5,5	15	M10x 1	M4	670	278	6,6	7000ADFC7
TBK 12	46	6	13	11	6,6	6,5	5,5	18	M12x 1	M4	725	310	8,9	7001ADFC7
TBK 15	54	6	15	11	6,6	6,5	5,5	18	M15x 1	M4	775	345	10,2	7002ADFC7
TBK 17	68	8	19	14	9	8,5	6,6	28	M17x 1	M5	1400	569	12,7	7203BDFC7
TBK 20	70	8	19	14	9	8,5	6,6	22	M20x 1	M5	1820	840	17,3	7004ADFC7
TBK 25	85	10	22	17,5	11	11	9	33	M25x 1	M6	2060	1020	19,3	7205BDFC7
TBK 30	102	11	23	20	14	13	11	33	M30x 1	M6	2860	1660	19,9	7206BDFC7
TBK 35	114	12	26	20	14	13	11	35	M35x 1	M6	3800	2400	26	7207BDFC7
TBK 40	130	14	33	26	18	17,5	14	37	M40x 1	M6	4500	2770	27,5	7208BDFC7

TBK Composion list										
번호	1	2	3	4	5	6	7			
품명	하우징 Housing	베어링 Bearing	로크너트 Lock nut	방진실	칼라 Color	누름판	세트스크류 Set Screw			
수량	1	2	1	2	2	1	1~2			
재질	SM45C	SUJ2	SM45C	우레탄 Urethane	SM45C	SM45C	SM45C			
마감	흑착색 Black Fast	흑착색 Black Fast	흑착색 Black Fast	흑착색 Black Fast	흑착색 Black Fast	흑착색 Black Fast	흑착색 Black Fast			

**TFK Fixed axis**

**TFK6~40**

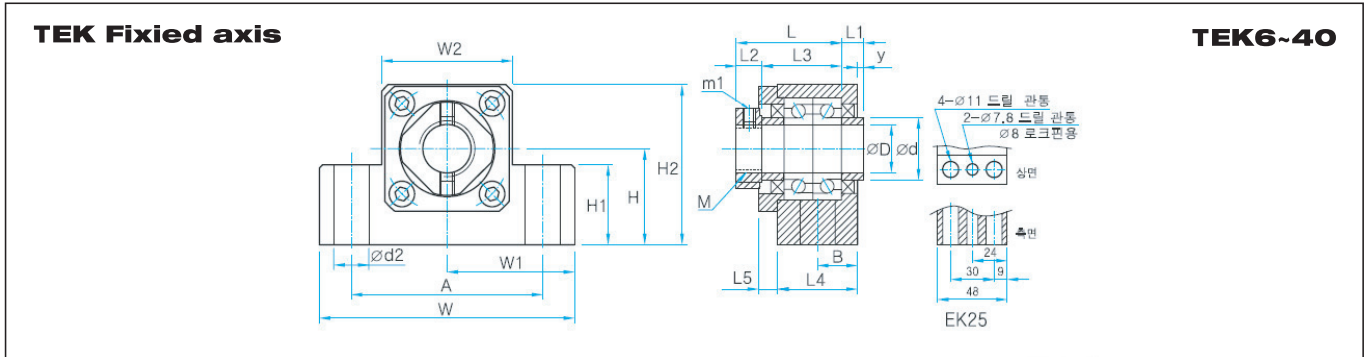


형번 Model	내경 Internal Diameter	칼라 외경 Outer Diameter of Color	프랜지 넓이 Frenzy Width	프랜지경 Frenzy Diameter	누름판 외경 Weigh down Outer Diameter	몸통외경 g6 Trunk External	길이 Length	축단 칼라 길이 Length of Side Color	로크너트 두께 Thickness of Lock nut		몸통 길이 Trunk Length	프랜지 길이 Length of Frenzy	누름판 두께 Thickness of Pushing plate	
	φ D	φ d	W	φ A	φ N	φ S	L	L1	L2	L3	L4	L5	L6	y
TFK6	6	9.5	28	36	-	22	22	3.5	5	17	13	7	-	1.5
TFK8	8	11	35	43	-	28	26	6	6.5	19.5	14	9	-	1.5
TFK10	10	14	42	52	-	34	29	5.5	8	21	17	11	-	-
TFK12	12	15.3	44	54	-	36	29.5	5.5	8	21.5	17	11	-	0.5
TFK15	15	14	52	63	-	40	36	10	8	28	17	15	-	4
TFK17	17	21	61	77	-	50	43	9	10	33	23	22	-	-
TFK20	20	25.5	68	85	-	57	48	9/12	10	38	30	22	-	-
TFK25	25	30.5	92	122	80	80	52	10	12	40	27	27	12	-
TFK25T			79	98	-	63	61	10	17	44	30		-	4
TFK30	30	36.5	106	138	96	90	55	11	12	43	30	29	14	-
TFK30T			93	117	-	75	60		17		32	30	-	-
TFK35	35	38.5	38.5	154	112	100	63	12	17	46	32	32	14	-
TFK40	40	48	48	176	126	120	71	16	19	52	43	36	18	-

형번 Model	장착 치수 Fixture Dimension PCD	장착 구멍 치수 Fixture Hole Dimension			로크너트 Lock nut	로크너트 고정나사 Lock nut Fixture Screw	기본 중정 격 하중 Regular load Capacity	한계 하중 Limit load Capacity	강성 Stengthness	사용 베어링 Bearing Type
	P	φ d1	φ d2	h	Mx(피치)	m1	kgf	kgf	kg f/μm	BRG
TFK6	28	6.5	3.4	4	M6x0,75	M2,6	-	-	-	EN6
TFK8	35	6.5	3.4	4	M8x1	M3	-	-	-	EN8
TFK10	42	8	4.5	5	M10x1	M4	670	670	6,6	7000ADFC7
TFK12	44	8	4.5	5	M12x1	M4	725	725	8,9	7001ADFC7
TFK15	50	9.5	5.5	6	M15x1	M4	775	775	10,2	7002ADFC7
TFK17	62	11	11	10	M17x1	M5	1400	1400	12,7	7203BDFC7
TFK20	70	11	11	10	M20x1	M5	1820	1820	17,3	7204BDFC7
TFK25	100	17.5	17.5	11	M25x1,5	M6	2060	2060	19,3	7205BDFC7
TFK25T	80	14	14	13						7205BDFC7
TFK30	116	17.5	17.5	11	M30x1,5	M6	2860	2860	19,9	7206BDFC7
TFK30T	95									7206BDFC7
TFK35	132	17.5	17.5	11	M35x1,5	M6	3800	3800	26	7207BDFC7
TFK40	150	20	20	13	M4x10,5	M6	4500	4500	27,5	7208BDFC7

**TFK Composition list**

번호	1	2	3	4	5	6	7
품명	하우징 Housing	베어링 Bearing	로크너트 Lock nut	방진셀	칼라 Color	누름판	세트스크류 Set Screw
수량	1	2	1	2	2	1	1~2
재질	SM45C	SUJ2	SM45C	우레탄 Urethane	SM45C	SM45C	SM45C
마감	흑착색 Black Fast	흑착색 Black Fast	흑착색 Black Fast	흑착색 Black Fast	흑착색 Black Fast	흑착색 Black Fast	흑착색 Black Fast



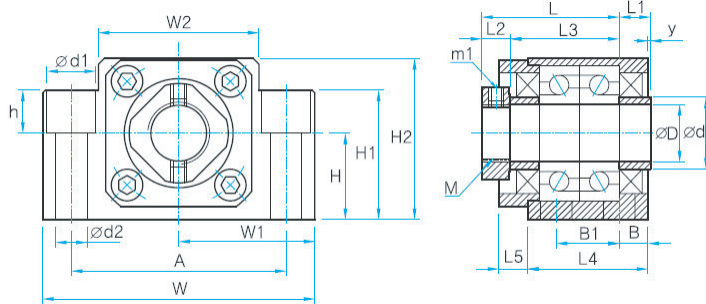
형번 Model	내경 Internal Diameter	칼라 외경 Outer Diameter of Color	블록 너비 Width of Block	중심 넓이 Width of Center $\pm 0,02$	머리 넓이 Width of Head	중심 높이 Hight of Center $\pm 0,02$	어깨 높이 Hight of Soulder	블록 높이 Hight of Block	길이 Length	측단칼라 길이 Length of Side Color	로크 너트 두께 Thickness of Lock nut	블록 길이 Length of Block	누름판 두께 Thickness of Pushing plate		
	$\varnothing D$	$\varnothing d$	W	W1	W2	H	H1	H2	L	L1	L2	L3	L4	L5	y
TEK6	6	9,5	42	21	18	17	20	25	22	3,5/5,5	5	17	20	-	1,5
TEK8	8	11	52	26	25	25	26	32	26	4/5,5	6,5	19,5	23	-	-
TEK10	10	14	70	35	36	25	24	43	29	7	8	21	24	6	1
TEK12	12	15,3	70	35	36	25	24	43	29,5	7	8	21,5	24	6	1
TEK15	15	19,5	80	40	41	30	25	49	36	7	8	28	25	6	2
TEK20	20	25,5	95	42,5	56	30	25	58	48	9/12	10	38	42	10	-
TEK25	25	30,5	105	52,5	66	35	25	68	56	10	12	44	48	13	-

형번 Model	장착치수 Fixture Dimension PCD		장착 구멍 치수 Fixture Hole Dimension			로크너트 Lock nut Mx(피치)	로크너트 고정나사 Lock nut Fixture Screw m1	기본 중정 격 하중 Regular load Capacity kgf	한계 하중 Limit load Capacity kgf	강성 Stengthness kg f/um	사용 베어링 Bearing Type
	A	B	$\varnothing d1$	$\varnothing d2$	h						
TEK6	30	10	5,6	5,6	11	30	M3	-	-	-	EN6
TEK8	38	11,5	11	6,6	12	M8 x 1	M3	450	148	5,4	EN8
TEK10	52	12	9	9	-	M10 x 1	M4	670	278	6,6	7000ADFC7
TEK12	52	12	9	9	-	M12 x 1	M4	725	310	8,9	7001ADFC7
TEK15	60	12,5	11	11	-	M15 x 1	M4	775	345	10,2	7002ADFC7
TEK20	75	21	11	11	-	M20 x 1	M5	1820	840	17,3	7204BDFC7
TEK25	85	9	11	11	-	M25 x 1,5	M6	2060	1020	19,3	7205BDFC7

TBK Composion list										
번호	1	2	3	4	5	6	7			
품명	하우징 Housing	베어링 Bearing	로크너트 Lock nut	방진실	칼라 Color	누름판	세트스크류 Set Screw			
수량	1	2	1	2	2	1	1~2			
재질	SM45C	SUJ2	SM45C	우레탄 Urethane	SM45C	SM45C	SM45C			
마감	흑착색 Black Fast	흑착색 Black Fast	흑착색 Black Fast	흑착색 Black Fast	흑착색 Black Fast	흑착색 Black Fast	흑착색 Black Fast			

**TAK Fixed axis**

**TAK10~20**

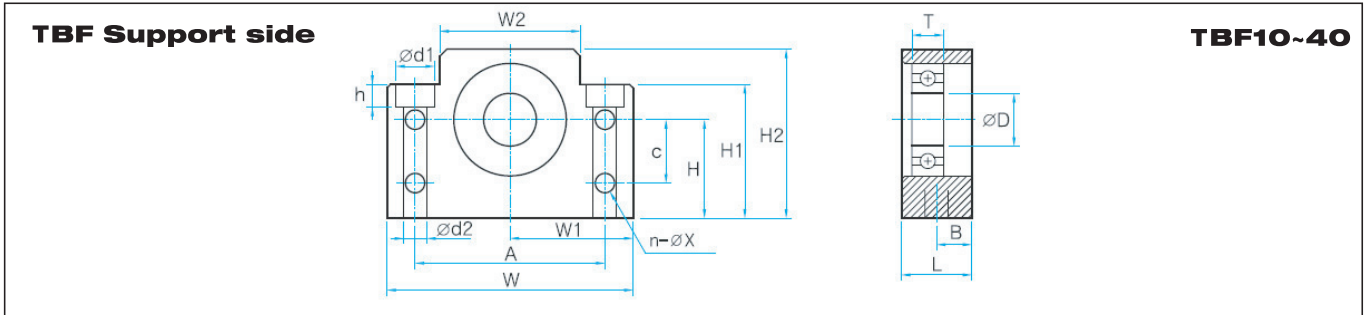


형번 Model	내경 Internal Diameter	칼라외경 Outer Diameter of Color	블록넓이 Width of Block	중심넓이 Width of Center $\pm 0.02$	머리넓이 Width of Head	중심높이 Hight of Center $\pm 0.02$	어깨높이 Hight of Soulder	블록높이 Hight of Block	길이 Length	측단칼라 길이 Length of Side Color	로크너트 두께 Thickness of Lock nut	블록길이 Length of Block	누름판 두께 Thickness of Pushing plate		
	$\phi D$	$\phi d$	W	W1	W2	H	H1	H2	L	L1	L2	L3	L4	L5	y
TAK 10	10	14	70	35	36	25	35	43	29	7	8	21	24	6	1
TAK 12	12	15,3	70	35	36	25	35	43	29,5	7	8	21,5	24	6	1
TAK 15	15	19,5	80	40	41	30	40	49	36	7	8	28	25	6	2
TAK 20	20	25,5	95	42,5	56	30	45	58	48	9/12	10	38	42	10	-

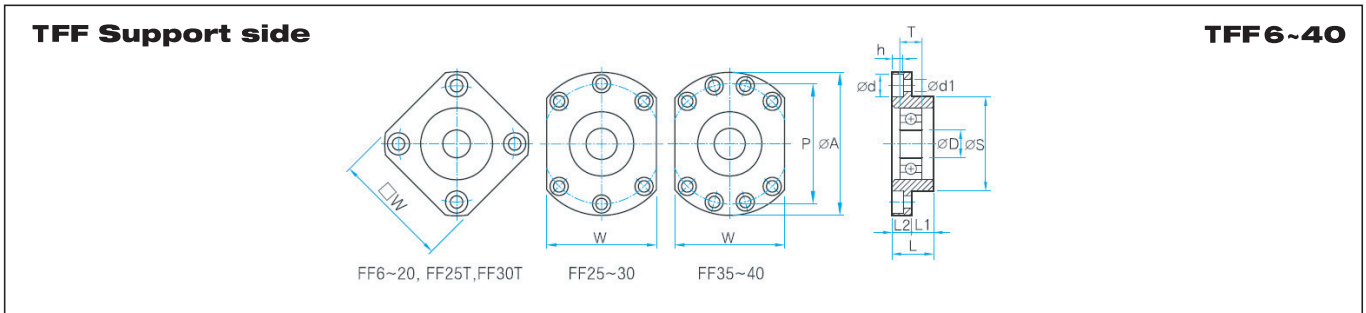
형번 Model	장착 치수 Fixture Dimension			장착 구멍 치수 Fixture Hole Dimension			로크너트 Lock nut	로크너트 고정나사 Lock nut Fixture Screw	기본 중정 격 하중 Regular load Capacity	한계 하중 Limit load Capacity	강성 Stengthness	사용 베어링 Bearing Type
	A	B	B1	$\phi d1$	$\phi d2$	h	Mx(피치)	m1	kgf	kgf	kg f/ $\mu m$	BRG
TAK 10	52	12	-	14	8,5	11	M10 x 1	M4	670	278	6,6	7000ADFC7
TAK 12	52	12		14	8,5	11	M12 x 1	M4	725	310	8,9	7001ADFC7
TAK 15	60	12,5	-	17	11	15	M15 x 1	M4	775	345	10,2	7002ADFC7
TAK 20	75	10	22	17	11	15	M120 x 1	M5	1820	840	17,3	7204ADFC7

**TAK Composion list**

번호	1	2	3	4	5	6	7
품명	하우징 Housing	베어링 Bearing	로크너트 Lock nut	방진실	칼라 Color	누름판	세트스크류 Set Screw
수량	1	2	1	2	2	1	1~2
재질	SM45C	SUJ2	SM45C	우레탄 Urethane	SM45C	SM45C	SM45C
마감	흑착색 Black Fast	흑착색 Black Fast	흑착색 Black Fast	흑착색 Black Fast	흑착색 Black Fast	흑착색 Black Fast	흑착색 Black Fast



형번 Model	내경 Internal Diameter	블록 넓이 Width of Block	중심높이 Width of Center $\pm 0,02$	머리 높이 Width of Head	중심높이 Height of Center $\pm 0,02$	어깨높이 Height of Shoulder	블록높이 Height of Block	블록길이 Height of Block	장착치수 Fixture Dimension		장착 구멍 치수 Fixture Hole Dimension			정면 장착 구멍 치수 Front Fixture Hole Dimension			베어링 두께 Thickness of Bearing	사용 베어링 Bearing Type
	$\varphi D$	W	W1	W2	H	H1	H2	L	A	B	$\varphi d1$	$\varphi d2$	h	n	X	c	T	BRG
TBF 10	8	60	30	34	22	32,5	39	20	46	10	11	6,6	5	4	5,5	15	7	608ZZ
TBF 12	10	60	30	35	25	35	43	20	46	10	11	6,6	6,5	4	5,5	18	8	6000ZZ
TBF 15	15	70	35	40	28	38	48	20	54	10	11	6,6	6,5	4	5,5	18	9	6002ZZ
TBF 17	17	86	43	50	39	55	64	23	68	11,5	14	9	8,5	4	6,6	28	12	6203ZZ
TBF 20	20	88	44	52	34	50	60	26	70	13	14	9	8,5	4	6,6	22	12	6004ZZ
TBF 25	25	106	53	64	48	70	80	30	85	15	17,5	11	11	4	9	33	15	6205ZZ
TBF 30	30	128	64	76	51	78	89	32	102	16	20	14	13	4	11	33	16	6206ZZ
TBF 35	35	140	70	88	52	79	96	32	114	16	20	14	13	4	11	35	17	6207ZZ
TBF 40	40	160	80	100	60	90	110	37	130	18,5	26	18	17,5	4	14	37	18	6208ZZ



형번 Model	내경 Internal Diameter	프렌지 넓이 Frenzy Width	프렌지경 Frenzy Diameter	몸통외경 ø6 Trunk External	길이 Length	몸통길이 Trunk Length	프렌지 두께 Frenzy Thickness	장착치수 PCD Fixture Dimension	장착구멍치수 Fixture Hole Dimension			베어링 두께 Thickness of Bearing	사용 베어링 Bearing Type
	$\varphi D$	W	$\varphi A$	$\varphi S$	L	L1	L2	P	$\varphi d$	$\varphi d1$	h	T	BRG
TFF6	6	28	36	22	10	4	6	28	6,5	3,4	4	6	606ZZ
TFF8	6	28	36	22	10	4	6	28	6,5	3,4	4	6	606ZZ
TFF10	8	35	43	28	12	5	7	35	6,5	3,4	4	7	608ZZ
TFF12	10	42	52	34	15	8	7	42	8	4,5	4	8	6000ZZ
TFF15	15	52	63	40	17	8	9	50	9,5	5,5	6	9	6002ZZ
TFF17	17	61	77	50	20	9	11	62	11	6,6	10	12	6203ZZ
TFF20	20	68	85	57	20	9	11	70	11	6,6	10	14	6204ZZ
TFF25	25	92	122	80	30	15	15	100	17,5	11	11	15	6205ZZ
TFF25T		79	98	63	24	10	14	80	14	9	13	15	
TFF30	30	106	138	90	32	17	15	116	17,5	11	11	16	6206ZZ
TFF30T		93	117	75	27	9	18	95	17,5	11	11	16	
TFF35	35	120	154	100	34	19	15	132	17,5	11	11	17	6207ZZ
TFF40	40	128	176	120	36	18	18	150	20	14	13	18	6208ZZ

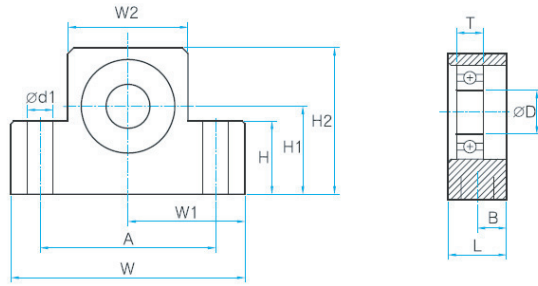
**TBF Composition list**

번호	1	2	3
품명	하우징 Housing	베어링 Bearing	스냅링 Snap ring
수량	1	2	1
재질	SM45C	SUJ2	SM45C
마감	흑착색 Black Fast	흑착색 Black Fast	흑착색 Black Fast

**TFF Composition list**

번호	1	2	3
품명	하우징 Housing	베어링 Bearing	스냅링 Snap ring
수량	1	2	1
재질	SM45C	SUJ2	SM45C
마감	흑착색 Black Fast	흑착색 Black Fast	흑착색 Black Fast

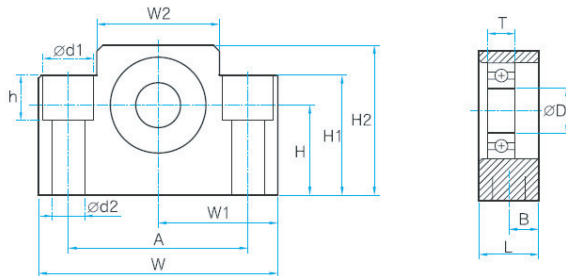
**TEF Support side**



**TEF6~25**

형번	내경	블록너비	중심너비	머리너비	어깨높이	중심높이	블록높이	블록길이	장착치수		장착구멍 치수	베어링 두께	사용 베어링
	Internal Diameter $\varnothing D$	Width of Block W	Width of Center $\pm 0,02$ W1	Width of Head W2	Hight of Soulder H	Hight of Center $\pm 0,02$ H1	Hight of Block H2	Length of Block L	A	B	Fixture Hole Dimension $\varnothing d1$	Tickness of Bearing T	Bearing Type BRG
TEF 6	6	42	21	18	20	13	25	12	30	6	5,5	6	606
TEF 8	6	52	26	25	26	17	32	14	38	7	6,6	6	606
TEF 10	8	70	35	36	24	25	43	20	52	10	9	7	608
TEF 12	10	70	35	36	24	25	43	20	52	10	9	8	6000
TEF 15	15	80	40	41	25	30	49	20	60	10	9	9	6002
TEF 20	20	95	42,5	56	25	30	58	26	75	13	11	14	6204
TEF 25	25	105	52,5	66	25	35	68	30	85	15	11	15	6205

**TAF Support side**



**TAF10~20**

형번 Model	내경	블록너비	중심너비	머리너비	중심높이	어깨높이	블록높이	블록길이	장착 치수		장착 구멍 치수			베어링 두께	사용 베어링
	Internal Diameter $\varnothing D$	Width of Block W	Width of Center $\pm 0,02$ W1	Width of Head W2	Hight of Center $\pm 0,02$ H	Hight of Soulder H1	Hight of Block H2	Length of Block L	A	B	$\varnothing d1$	$\varnothing d2$	h	T	BRG
TAF 10	8	70	35	36	25	35	43	20	52	10	14	8,5	11	7	608
TAF 12	10	70	35	36	25	35	43	20	52	10	14	8,5	11	8	6000
TAF 15	15	80	40	41	30	40	49	20	60	10	17	11	15	9	6002
TAF 20	20	95	42,5	56	30	45	58	26	75	13	17	11	15	14	6204

**TEF Composition list**

번호	1	2	3
품명	하우징 Housing	베어링 Bearing	스냅링 Snap ring
수량	1	2	1
재질	SM45C	SUJ2	SM45C
마감	흑착색 Black Fast	흑착색 Black Fast	흑착색 Black Fast

**TAF Composition list**

번호	1	2	3
품명	하우징 Housing	베어링 Bearing	스냅링 Snap ring
수량	1	2	1
재질	SM45C	SUJ2	SM45C
마감	흑착색 Black Fast	흑착색 Black Fast	흑착색 Black Fast



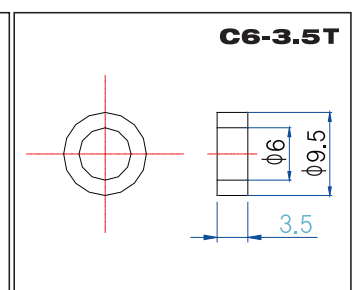
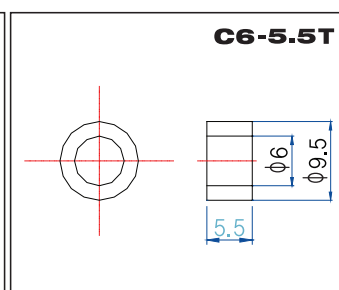
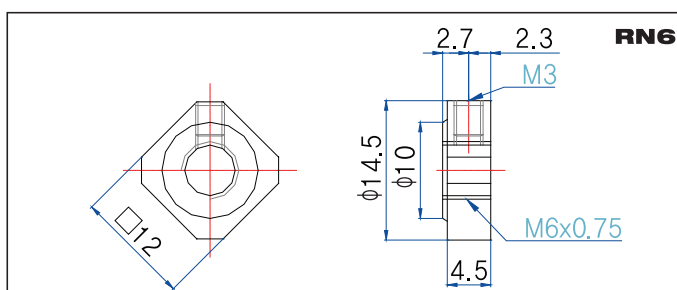
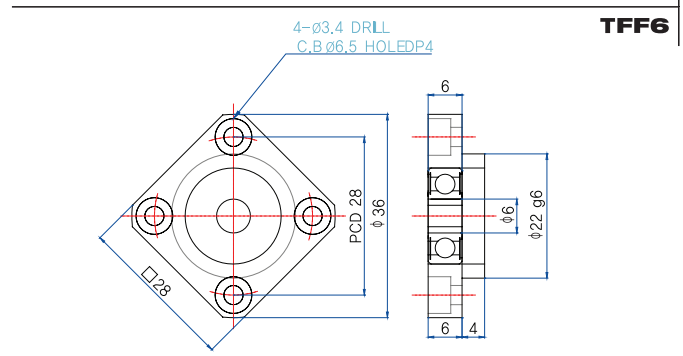
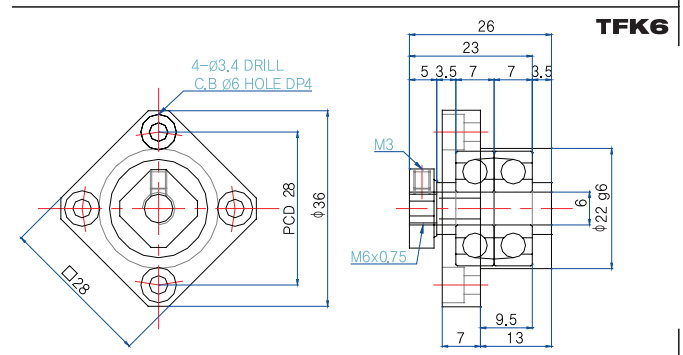
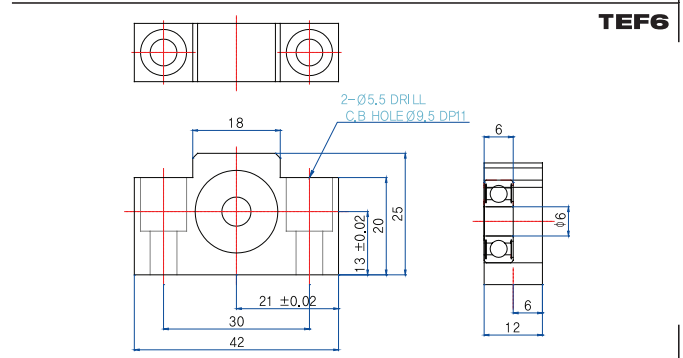
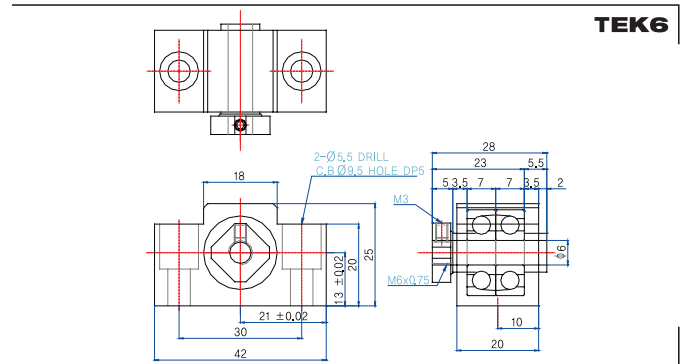
φ6

TEK6 Composition list		
부품명 Part Name	호칭 Model	수량 Q'ty
하우징 Housing	EK6	1
베어링 Bearing	EN6	1SET
칼라 Color	C6-5.5T C6-3.5T	1 1
방진셀 Dust proof seal	#6	1
로코너트 Lock Nut	RN6	1
로코너트용 세트나사 Set screw for Lock Nut	M3x0.5	1
고정밀급 베어링 교체가능 High accuracy bearing changable		

TEF6 Composition list		
부품명 Part Name	호칭 Model	수량 Q'ty
하우징 Housing	EF6	1
베어링 Bearing	606ZZ	1
스냅링 Snap ring	φ6	1

TFK6 Composition list		
부품명 Part Name	호칭 Model	수량 Q'ty
하우징 Housing	FK6	1
베어링 Bearing	EN6	1SET
칼라 Color	C6-3.5T C6-3.5T	1 1
방진셀 Dust proof seal	#6	1
로코너트 Lock Nut	RN6	1
로코너트용 세트나사 Set screw for Lock Nut	M3x0.5	1
고정밀급 베어링 교체가능 High accuracy bearing changable		

TFF6 Composition list		
부품명 Part Name	호칭 Model	수량 Q'ty
하우징 Housing	FF6	1
베어링 Bearing	606ZZ	1
스냅링 Snap ring	φ6	1



φ8

**TBK8 Composition list**

부품명 Part Name	호칭 Model	수량 Q'ty
하우징 Housing	EK8	1
베어링 Bearing	EN8	1SET
칼라 Color	C8-4T C8-5.5T	1
방진씰 Dust proof seal	#8	1
로코너트 Lock Nut	RN8	1
로코너트용 세트너사 Set screw for Lock Nut	M3x0,5	1

고정밀급 베어링 교체가능 High accuracy bearing changable

**TEF8 Composition list**

부품명 Part Name	호칭 Model	수량 Q'ty
하우징 Housing	EF8	1
베어링 Bearing	606ZZ	1
스냅링 Snap ring	φ6	1

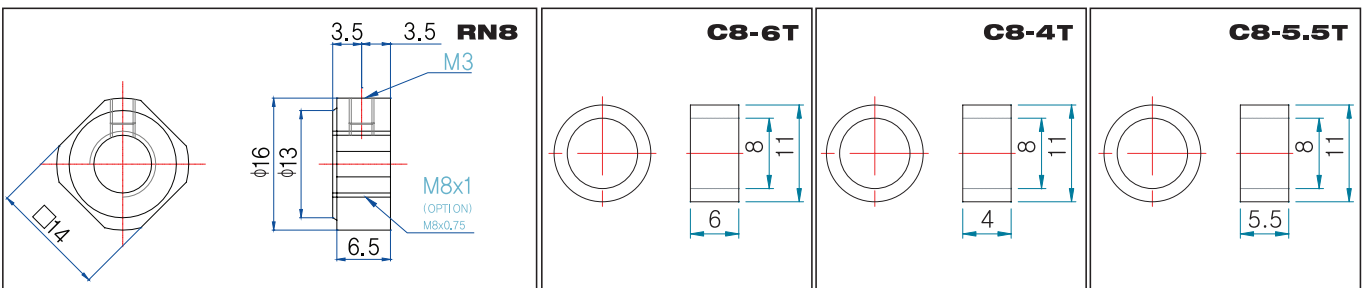
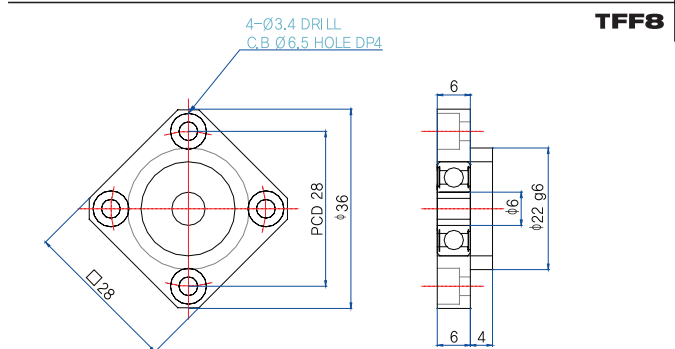
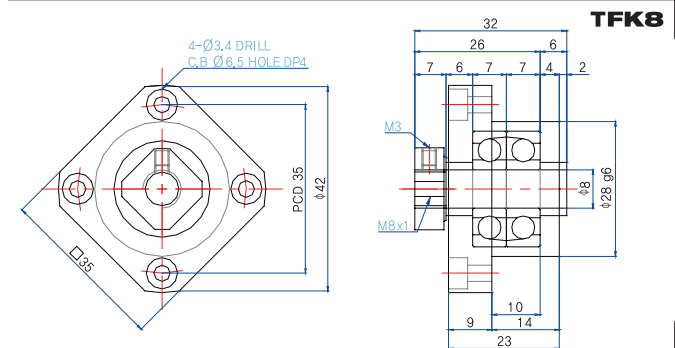
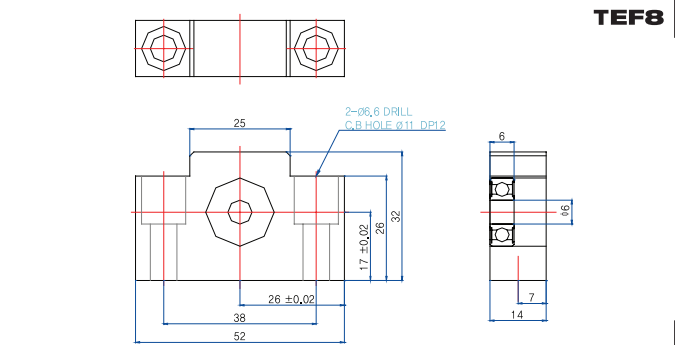
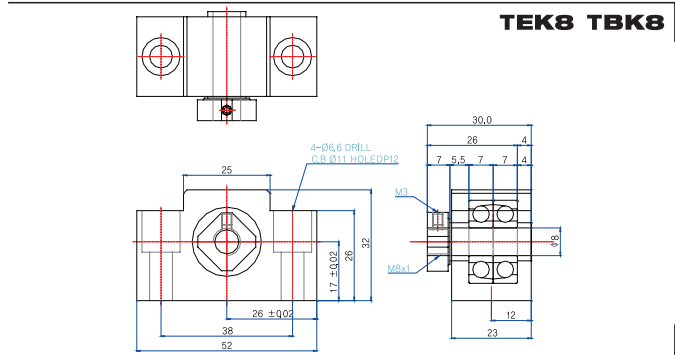
**TFK8 Composition list**

부품명 Part Name	호칭 Model	수량 Q'ty
하우징 Housing	FK8	1
베어링 Bearing	EN8	1SET
칼라 Color	C8-6T C8-6T	1
방진씰 Dust proof seal	#8	1
로코너트 Lock Nut	RN8	1
로코너트용 세트너사 Set screw for Lock Nut	M3x0,5	1

고정밀급 베어링 교체가능 High accuracy bearing changable

**TFF8 Composition list**

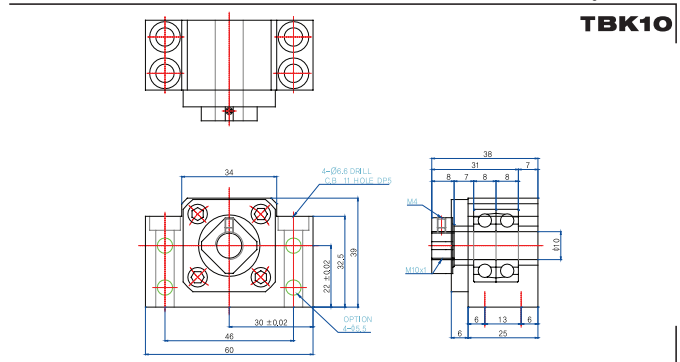
부품명 Part Name	호칭 Model	수량 Q'ty
하우징 Housing	FF8	1
베어링 Bearing	606ZZ	1
스냅링 Snap ring	φ6	1



$\phi 10$

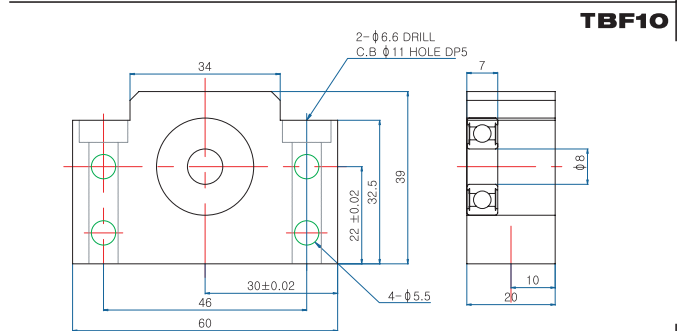
**TBK10 Composition list**

부품명 Part Name	호칭 Model	수량 Q'ty
하우징 Housing	BK10	1
베어링 Bearing	7000ADFC7	1SET
칼라 Color	C10-7T	1
	C10-7T	1
방진씰 Dust proof seal	#10	2
로코너트 Lock Nut	RN10	1
로코너트용 세트나사 Set screw for Lock Nut	M4x0,7	1



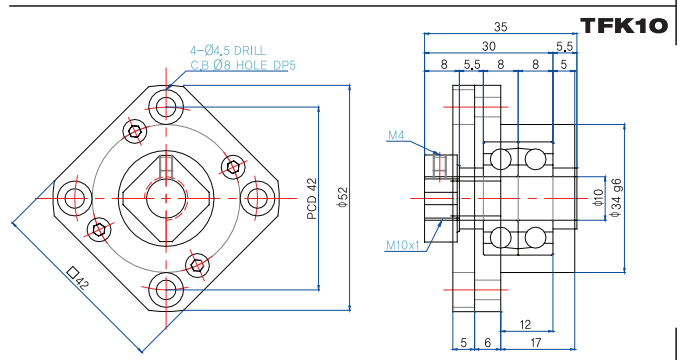
**TBF10 Composition list**

부품명 Part Name	호칭 Model	수량 Q'ty
하우징 Housing	BF10	1
베어링 Bearing	608ZZ	1
스냅링 Snap ring	$\phi 8$	1



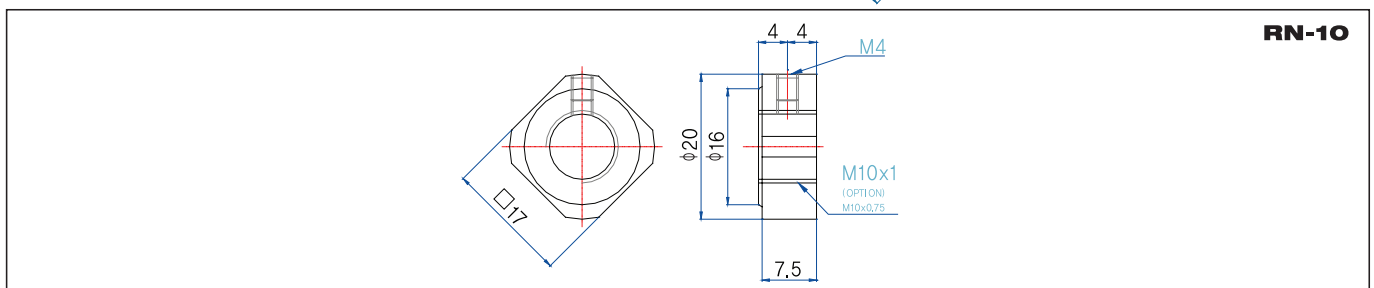
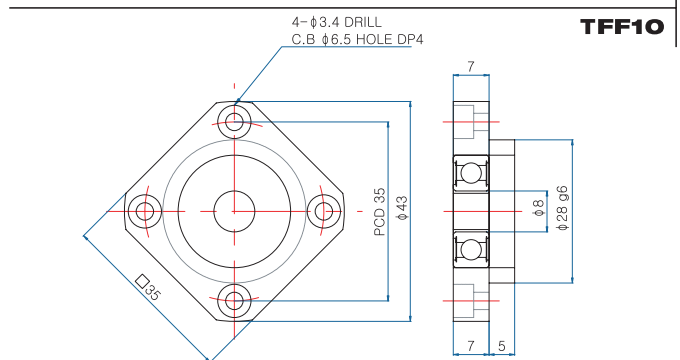
**TFK10 Composition list**

부품명 Part Name	호칭 Model	수량 Q'ty
하우징 Housing	FK10	1
베어링 Bearing	7000ADFC7	1SET
칼라 Color	C10-5.5T	2
방진씰 Dust proof seal	#10	2
로코너트 Lock Nut	RN10	1
로코너트용 세트나사 Set screw for Lock Nut	M4x0,7	1



**TFF10 Composition list**

부품명 Part Name	호칭 Model	수량 Q'ty
하우징 Housing	FF10	1
베어링 Bearing	608ZZ	1
스냅링 Snap ring	$\phi 8$	1



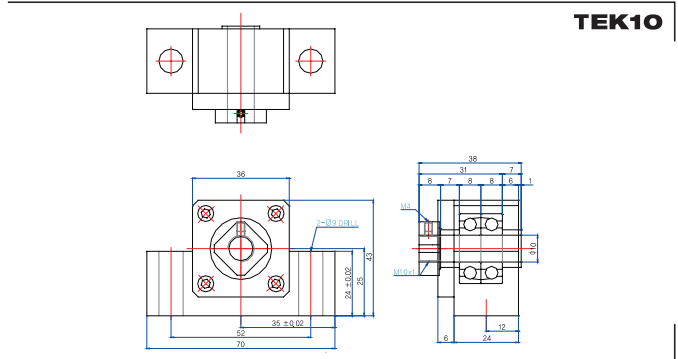
φ10

TEK10 Composition list		
부품명 Part Name	호칭 Model	수량 Q'ty
하우징 Housing	EK10	1
베어링 Bearing	7000ADFC7	1SET
칼라 Color	C10-7T	1
	C10-7T	1
방진씰 Dust proof seal	#10	2
로코너트 Lock Nut	RN10	1
로코너트용 세트나사 Set screw for Lock Nut	M4x0,7	1
고정밀급 베어링 교체가능 High accuracy bearing changable		

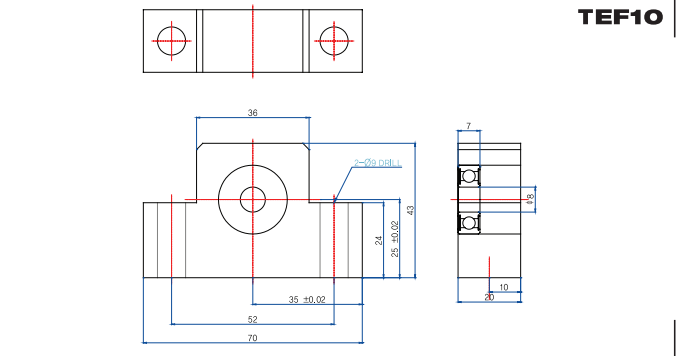
TEF10 Composition list		
부품명 Part Name	호칭 Model	수량 Q'ty
하우징 Housing	EF10	1
베어링 Bearing	608ZZ	1
스냅링 Snap ring	φ8	1

TAK10 Composition list		
부품명 Part Name	호칭 Model	수량 Q'ty
하우징 Housing	AK10	1
베어링 Bearing	7000ADFC7	1SET
칼라 Color	C10-7T	1
	C10-7T	1
방진씰 Dust proof seal	#10	2
로코너트 Lock Nut	RN10	1
로코너트용 세트나사 Set screw for Lock Nut	M4x0,7	1
고정밀급 베어링 교체가능 High accuracy bearing changable		

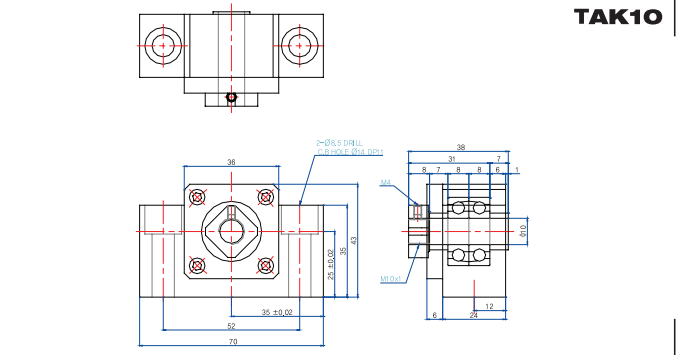
TAF10 Composition list		
부품명 Part Name	호칭 Model	수량 Q'ty
하우징 Housing	AF10	1
베어링 Bearing	608ZZ	1
스냅링 Snap ring	φ8	1



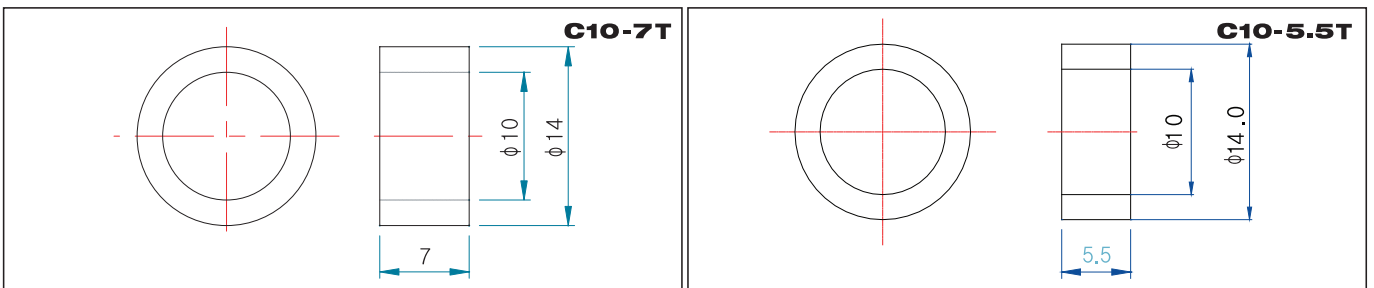
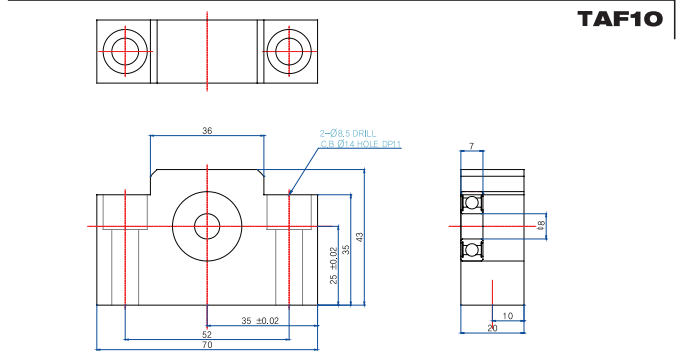
TEF10



TAK10



TAF10





φ12

**TEK12 Composition list**

부품명 Part Name	호칭 Model	수량 Q'ty
하우징 Housing	EK12	1
베어링 Bearing	7001ADFC7	1SET
칼라 Color	C12-7T	1
방진씰 Dust proof seal	#12	2
로코너트 Lock Nut	RN12	1
로코너트용 세트나사 Set screw for Lock Nut	M4x0,7	1
고정밀급 베어링 교체가능 High accuracy bearing changable		

**TEF12 Composition list**

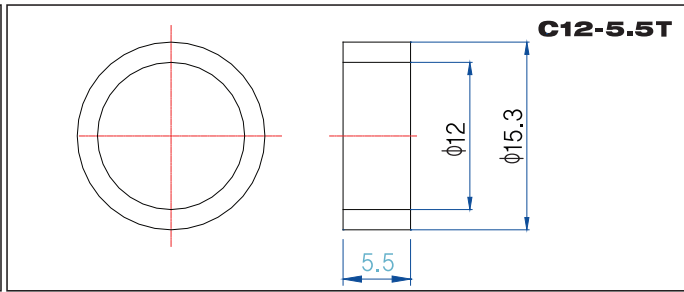
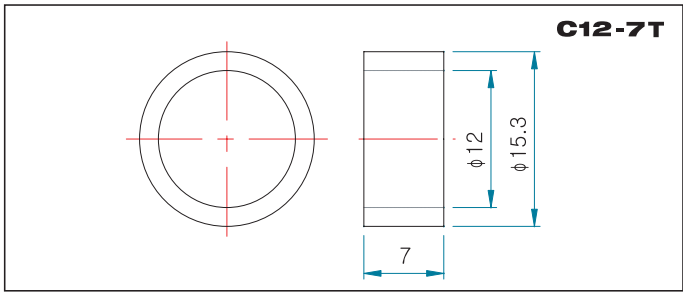
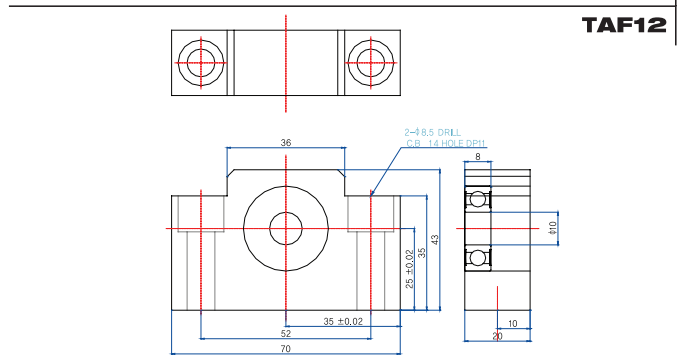
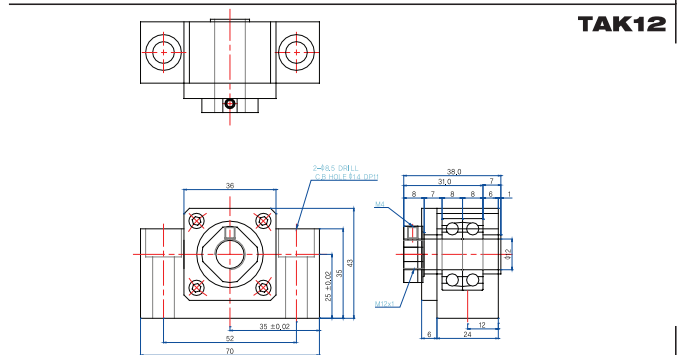
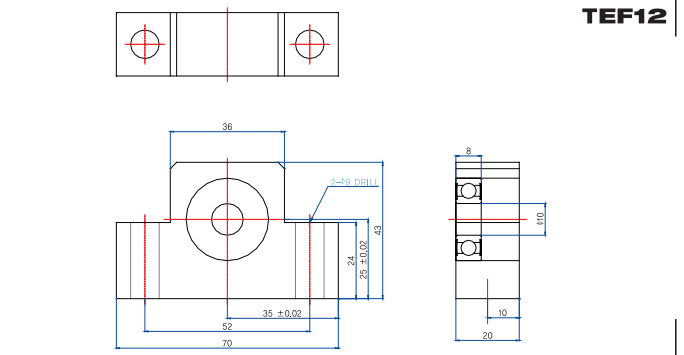
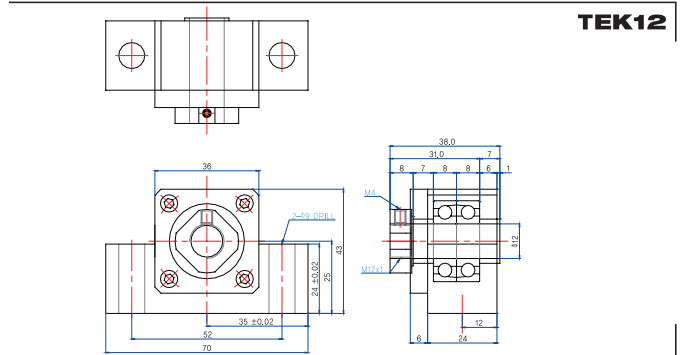
부품명 Part Name	호칭 Model	수량 Q'ty
하우징 Housing	EF12	1
베어링 Bearing	6000ZZ	1
스냅링 Snap ring	φ10	1

**TAK12 Composition list**

부품명 Part Name	호칭 Model	수량 Q'ty
하우징 Housing	AK12	1
베어링 Bearing	7001ADFC7	1SET
칼라 Color	C12-7T	1
방진씰 Dust proof seal	#12	2
로코너트 Lock Nut	RN12	1
로코너트용 세트나사 Set screw for Lock Nut	M4x0,7	1
고정밀급 베어링 교체가능 High accuracy bearing changable		

**TAF12 Composition list**

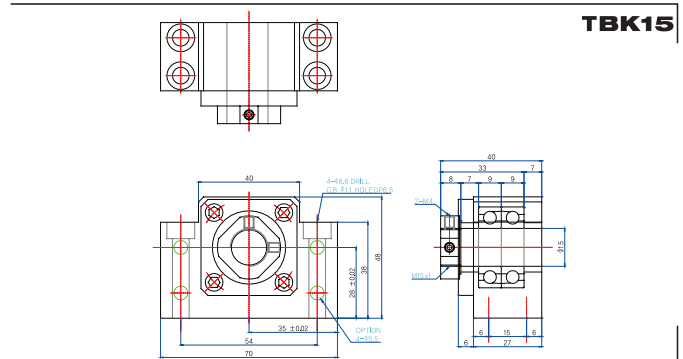
부품명 Part Name	호칭 Model	수량 Q'ty
하우징 Housing	AF12	1
베어링 Bearing	6000ZZ	1
스냅링 Snap ring	φ10	1



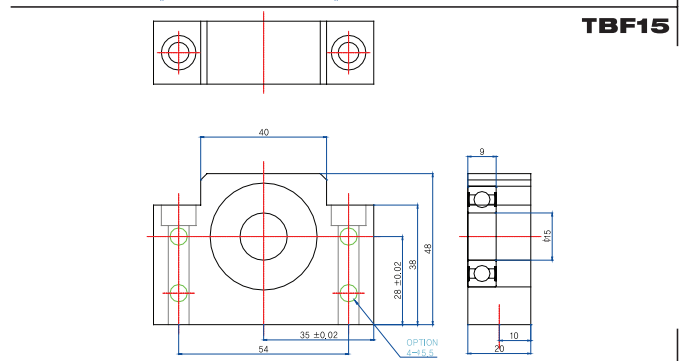
www.TPCpage.co.kr  
Cross Roller Slide Guide  
Cross Roller Slide Table  
Micro Stage  
Support Unit  
TPC Mechatronics Corp.

$\phi 15$

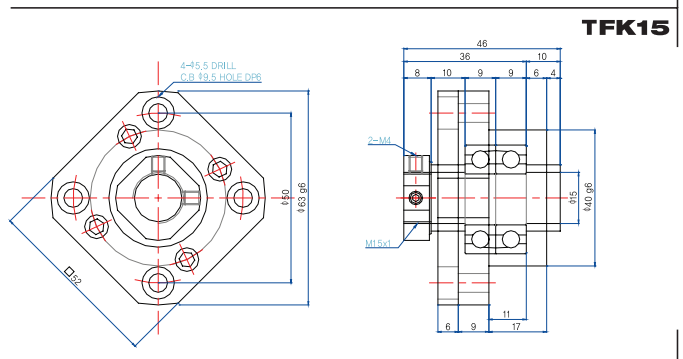
TBK15 Composition list			
부품명 Part Name	호칭 Model	수량 Q'ty	
하우징 Housing	BK15	1	
베어링 Bearing	7002ADFC7	1SET	
칼라 Color	C15-7T	2	
방진씰 Dust proof seal	#15	2	
로코너트 Lock Nut	RN15	1	
로코너트용 세트나사 Set screw for Lock Nut	M4x0,7	2	



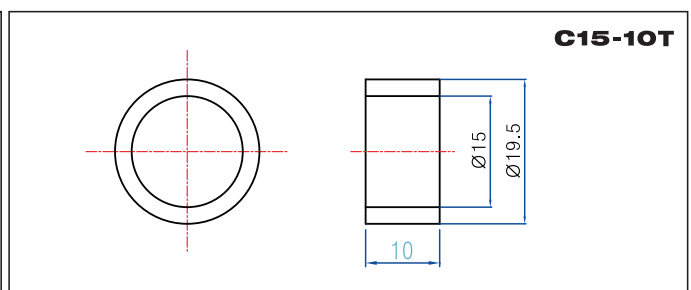
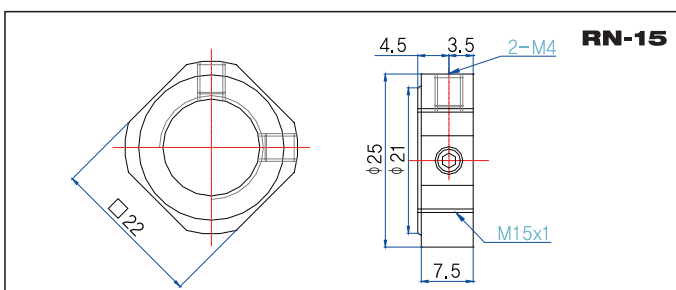
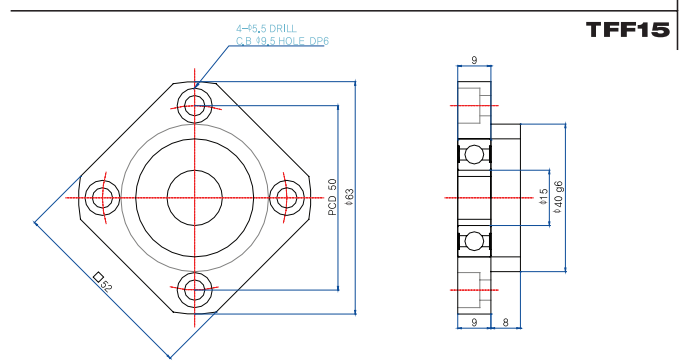
TBF15 Composition list			
부품명 Part Name	호칭 Model	수량 Q'ty	
하우징 Housing	BF15	1	
베어링 Bearing	6002ZZ	1	
스냅링 Snap ring	$\phi 15$	1	



TFK15 Composition list			
부품명 Part Name	호칭 Model	수량 Q'ty	
하우징 Housing	FK15	1	
베어링 Bearing	7002ADFC7	1SET	
칼라 Color	C15-10T	2	
방진씰 Dust proof seal	#15	2	
로코너트 Lock Nut	RN15	1	
로코너트용 세트나사 Set screw for Lock Nut	M4x0,7	2	



TFF15 Composition list			
부품명 Part Name	호칭 Model	수량 Q'ty	
하우징 Housing	FF15	1	
베어링 Bearing	6002ZZ	1	
스냅링 Snap ring	$\phi 15$	1	



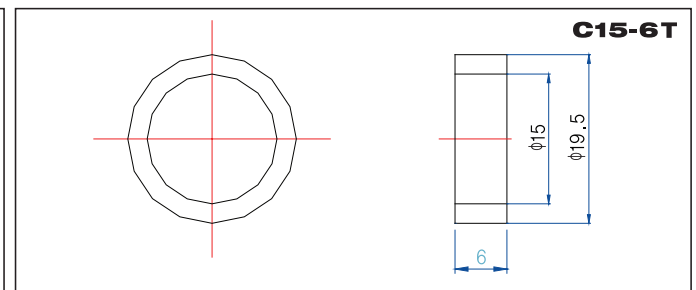
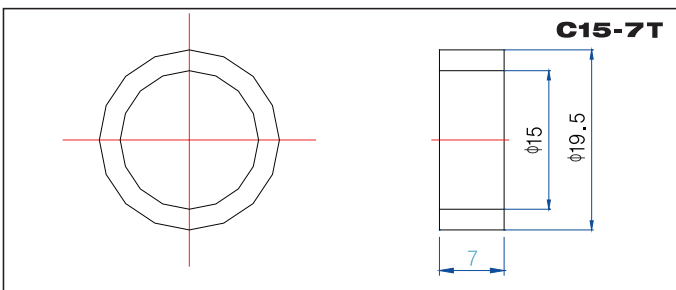
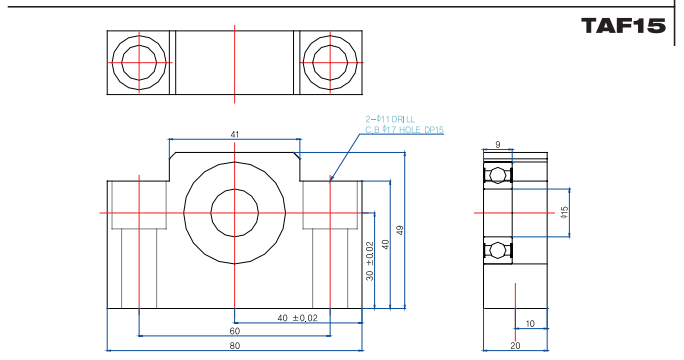
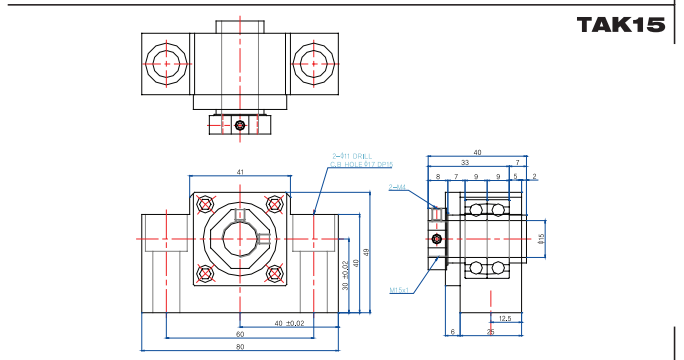
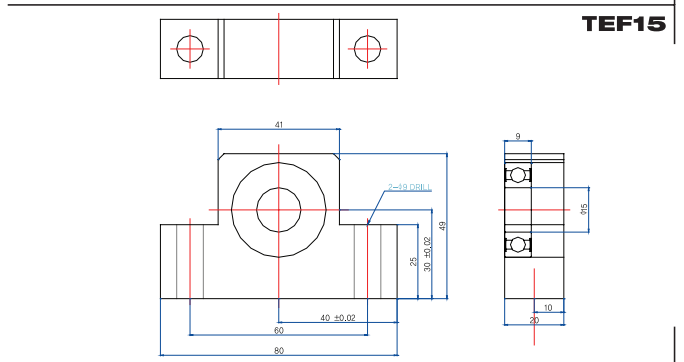
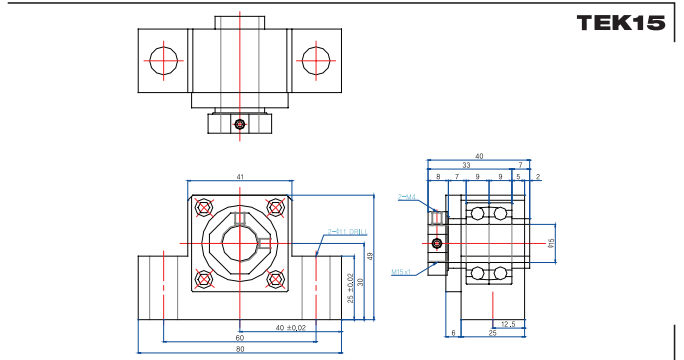
φ15

TEK15 Composition list		
부품명 Part Name	호칭 Model	수량 Q'ty
하우징 Housing	EK15	1
베어링 Bearing	7002ADFC7	1SET
칼라 Color	C15-7T	2
방진씰 Dust proof seal	#15	2
로코너트 Lock Nut	RN15	1
로코너트용 세트나사 Set screw for Lock Nut	M4x0.7	2

TEF15 Composition list		
부품명 Part Name	호칭 Model	수량 Q'ty
하우징 Housing	EF15	1
베어링 Bearing	6002ZZ	1
스냅링 Snap ring	φ15	1

TAK15 Composition list		
부품명 Part Name	호칭 Model	수량 Q'ty
하우징 Housing	AK15	1
베어링 Bearing	7002ADFC7	1SET
칼라 Color	C15-7T	2
방진씰 Dust proof seal	#15	2
로코너트 Lock Nut	RN15	1
로코너트용 세트나사 Set screw for Lock Nut	M4x0.7	2

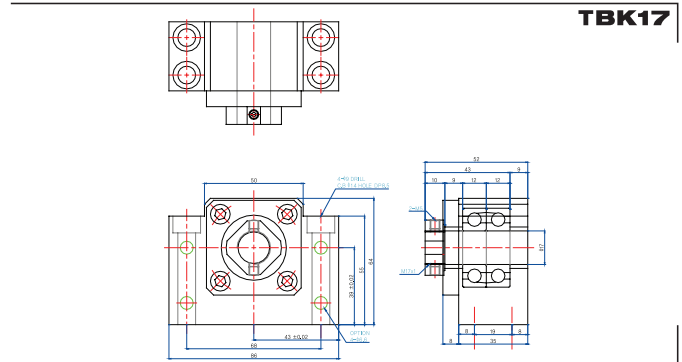
TAF15 Composition list		
부품명 Part Name	호칭 Model	수량 Q'ty
하우징 Housing	AF15	1
베어링 Bearing	6002ZZ	1
스냅링 Snap ring	φ15	1





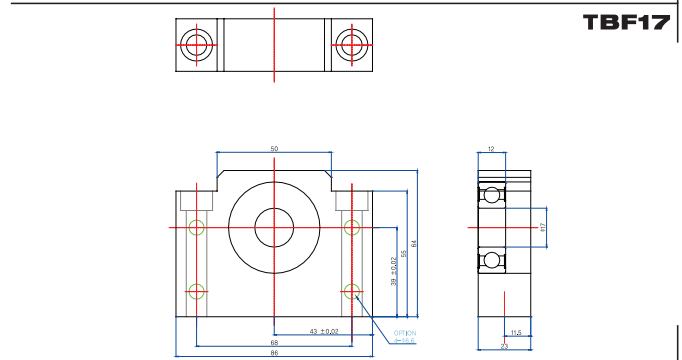
**φ17**  
**TBK17**

<b>TBK17 Composition list</b>		
부품명 Part Name	호칭 Model	수량 Q'ty
하우징 Housing	BK17	1
베어링 Bearing	7203BDFC7	1SET
칼라 Color	C17-9T	2
방진씰 Dust proof seal	#17	2
로코너트 Lock Nut	RN17	1
로코너트용 세트나사 Set screw for Lock Nut	M5x0,8	2



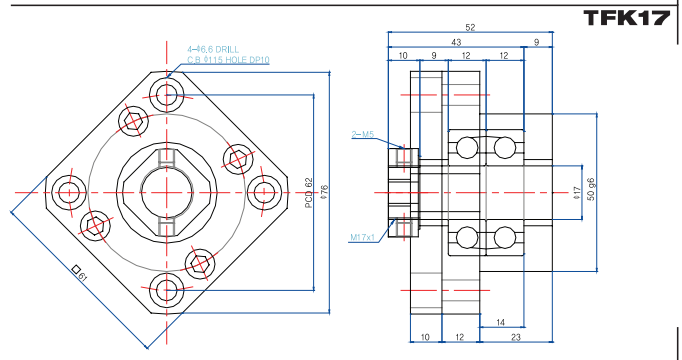
**TBF17**

<b>TBF17 Composition list</b>		
부품명 Part Name	호칭 Model	수량 Q'ty
하우징 Housing	BF17	1
베어링 Bearing	6203ZZ	1
스냅링 Snap ring	φ17	1



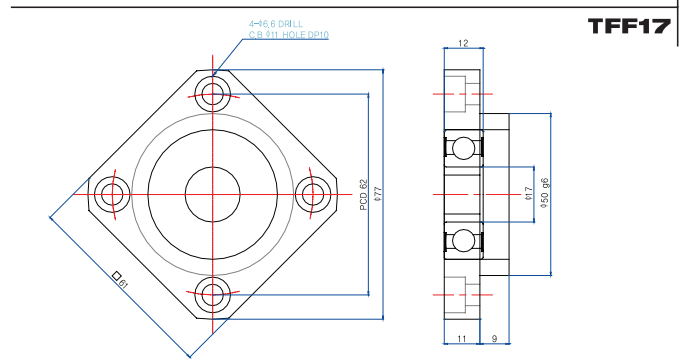
**TFK17**

<b>TFK17 Composition list</b>		
부품명 Part Name	호칭 Model	수량 Q'ty
하우징 Housing	FK17	1
베어링 Bearing	7203BDFC7	1SET
칼라 Color	C17-9T	2
방진씰 Dust proof seal	#17	2
로코너트 Lock Nut	RN17	1
로코너트용 세트나사 Set screw for Lock Nut	M5x0,8	2

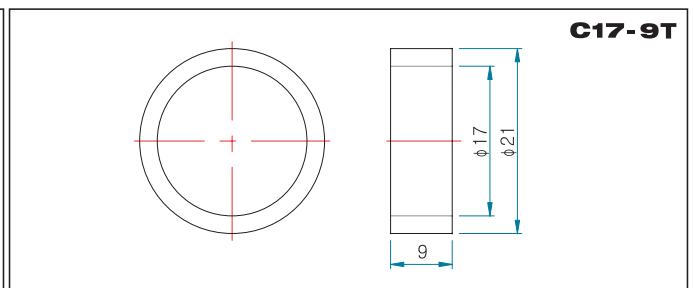
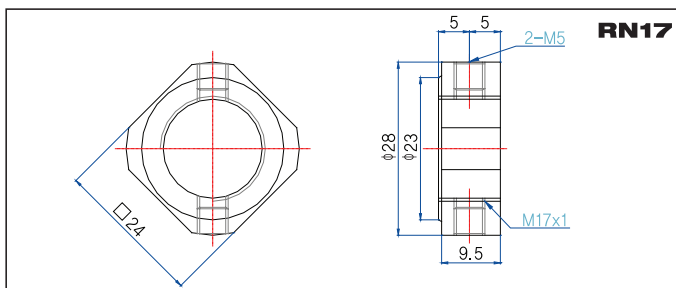


**TFF17**

<b>TFF17 Composition list</b>		
부품명 Part Name	호칭 Model	수량 Q'ty
하우징 Housing	FF17	1
베어링 Bearing	6203ZZ	1
스냅링 Snap ring	φ17	1

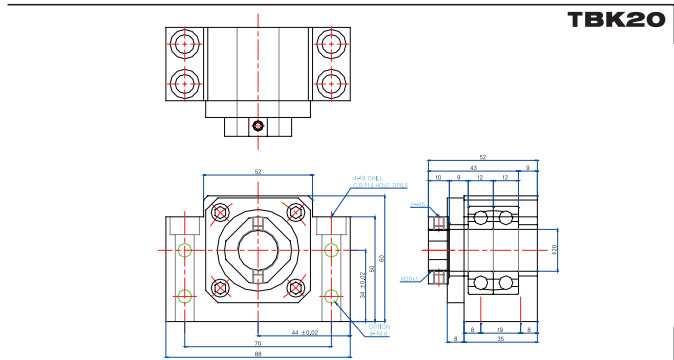


**C17-9T**

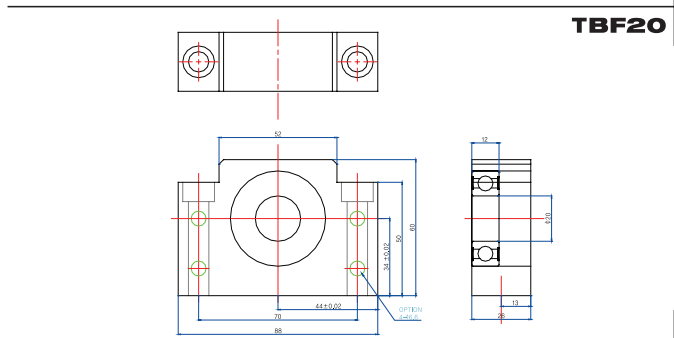


φ20

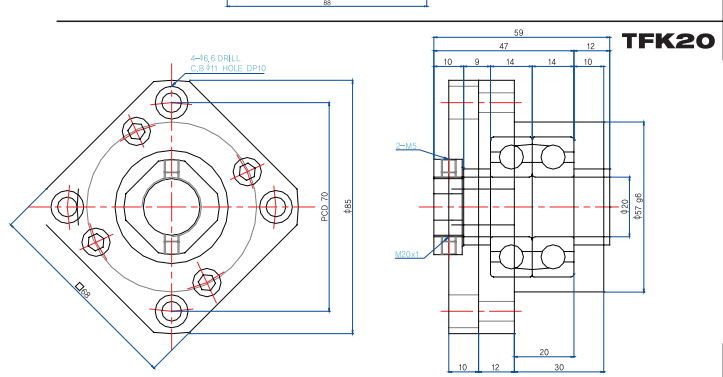
TBK20 Composition list		
부품명 Part Name	호칭 Model	수량 Q'ty
하우징 Housing	BK20	1
베어링 Bearing	7004ADFC7	1SET
칼라 Color	C20-9T	2
방진씰 Dust proof seal	#20	2
로코너트 Lock Nut	RN20	1
로코너트용 세트나사 Set screw for Lock Nut	M5x0,8	2



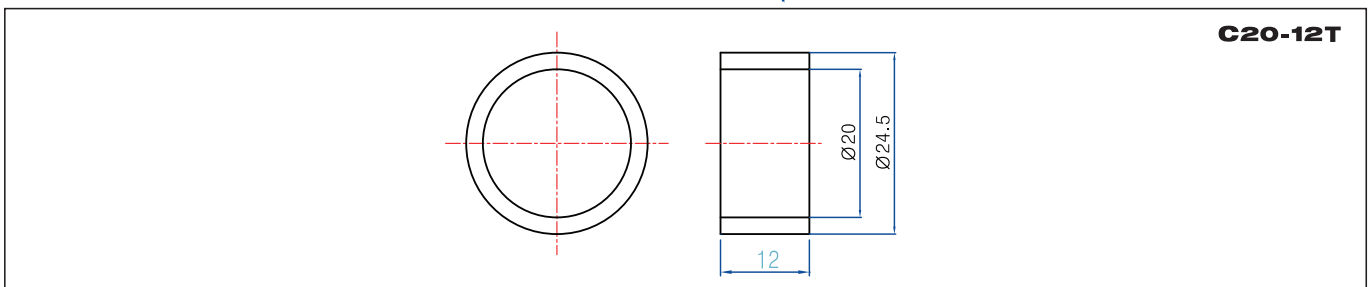
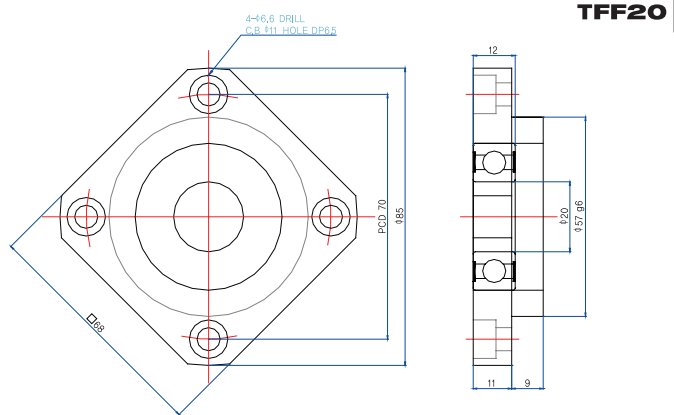
TBF20 Composition list		
부품명 Part Name	호칭 Model	수량 Q'ty
하우징 Housing	BF20	1
베어링 Bearing	6004ZZ	1
스냅링 Snap ring	φ20	1



TFK20 Composition list		
부품명 Part Name	호칭 Model	수량 Q'ty
하우징 Housing	FK20	1
베어링 Bearing	7004BDFC7	1SET
칼라 Color	C20-9T	1
칼라 Color	C20-12T	1
방진씰 Dust proof seal	#20	2
로코너트 Lock Nut	RN20	1
로코너트용 세트나사 Set screw for Lock Nut	M5x0,8	2

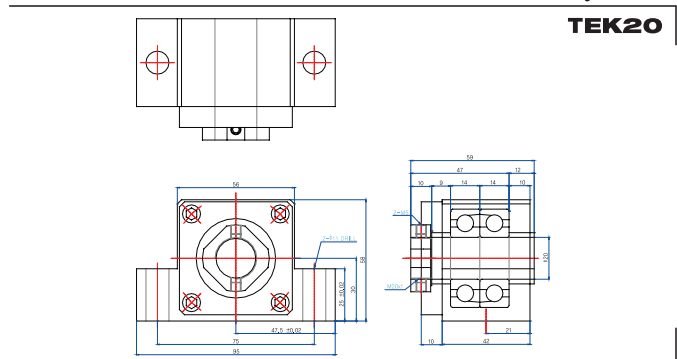


TFF20 Composition list		
부품명 Part Name	호칭 Model	수량 Q'ty
하우징 Housing	FF20	1
베어링 Bearing	6204ZZ	1
스냅링 Snap ring	φ20	1



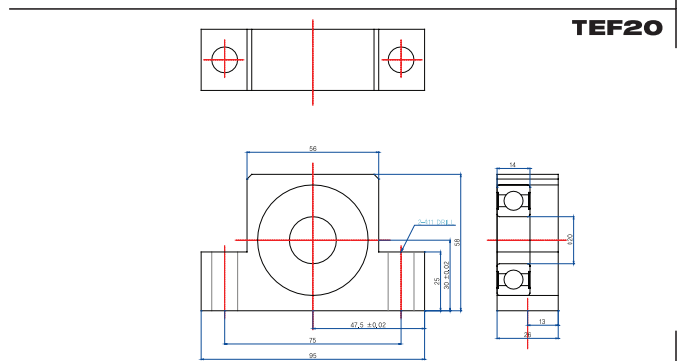
$\phi 20$   
TEK20

TEK20 Composition list			
부품명 Part Name	호칭 Model	수량 Q'ty	
하우징 Housing	EK20	1	
베어링 Bearing	7204BDFC7	1SET	
칼라 Color	C20-9T C20-12T	1 1	
방진씰 Dust proof seal	#20F	2	
로코너트 Lock Nut	RN20	1	
로코너트용 세트나사 Set screw for Lock Nut	M5x0,8	2	



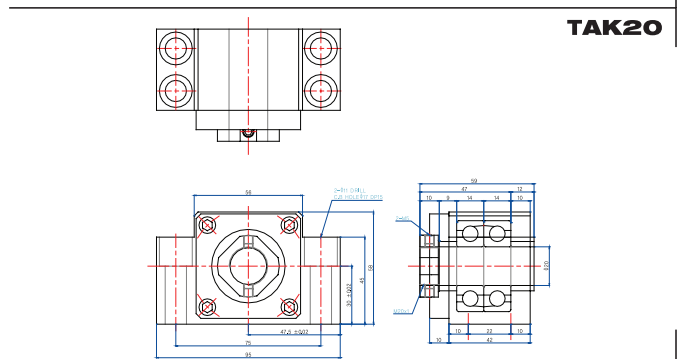
TEF20

TEF20 Composition list			
부품명 Part Name	호칭 Model	수량 Q'ty	
하우징 Housing	EF20	1	
베어링 Bearing	6204ZZ	1	
스냅링 Snap ring	$\phi 20$	1	



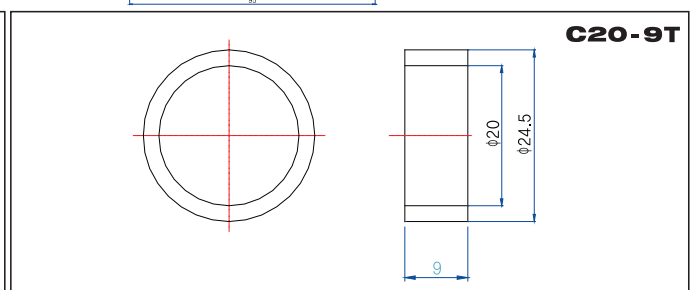
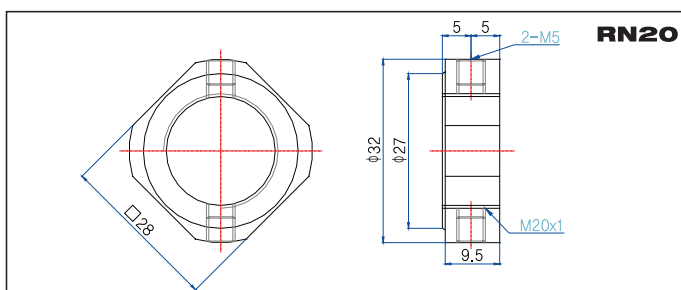
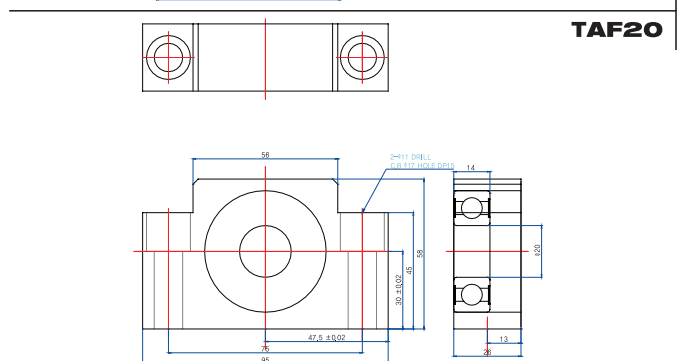
TAK20

TAK20 Composition list			
부품명 Part Name	호칭 Model	수량 Q'ty	
하우징 Housing	AK20	1	
베어링 Bearing	7204BDFC7	1SET	
칼라 Color	C20-9T C20-12T	1 1	
방진씰 Dust proof seal	#20F	2	
로코너트 Lock Nut	RN20	1	
로코너트용 세트나사 Set screw for Lock Nut	M5x0,8	2	



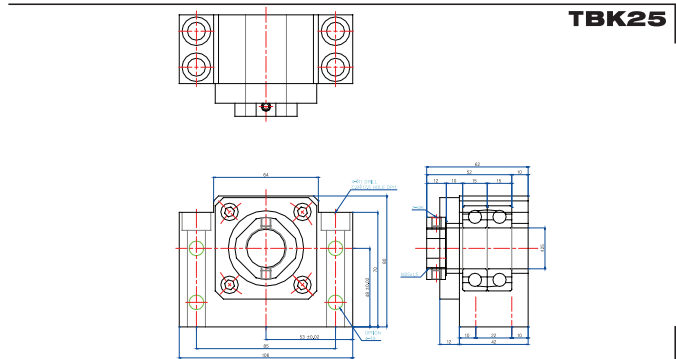
TAF20

TAF20 Composition list			
부품명 Part Name	호칭 Model	수량 Q'ty	
하우징 Housing	AF20	1	
베어링 Bearing	6204ZZ	1	
스냅링 Snap ring	$\phi 20$	1	



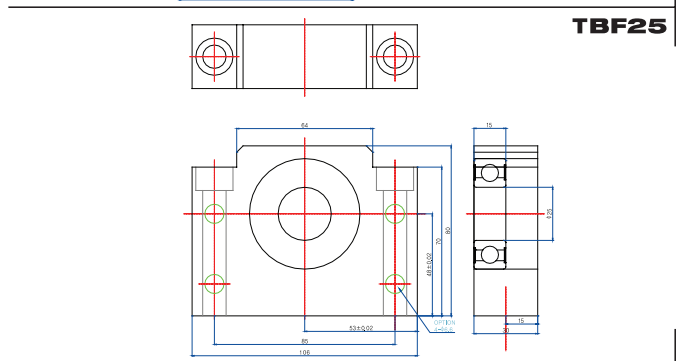
φ25

TBK25 Composition list		
부품명 Part Name	호칭 Model	수량 Q'ty
하우징 Housing	BK25	1
베어링 Bearing	7205BDFC7	1SET
칼라 Color	C25-10T	2
방진씰 Dust proof seal	#25	2
로코너트 Lock Nut	RN25	1
로코너트용 세트나사 Set screw for Lock Nut	M6x1	2



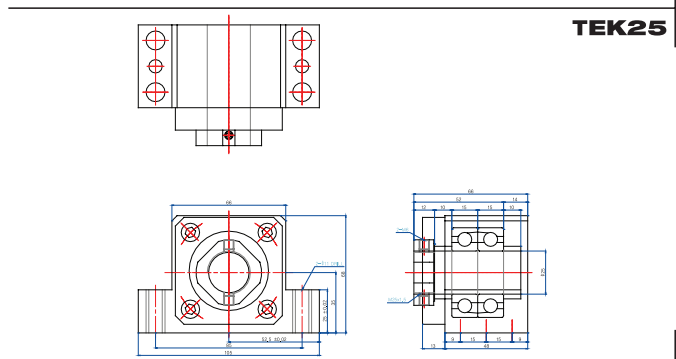
TBK25

TBF25 Composition list		
부품명 Part Name	호칭 Model	수량 Q'ty
하우징 Housing	BF25	1
베어링 Bearing	6005ZZ	1
스냅링 Snap ring	φ25	1



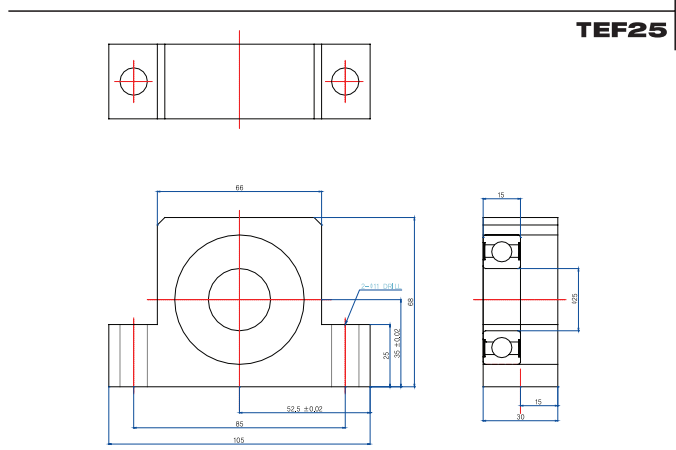
TBF25

TEK25 Composition list		
부품명 Part Name	호칭 Model	수량 Q'ty
하우징 Housing	EK25	1
베어링 Bearing	7205BDFC7	1SET
칼라 Color	C25-10T	2
방진씰 Dust proof seal	#25	2
로코너트 Lock Nut	RN25	1
로코너트용 세트나사 Set screw for Lock Nut	M6x1	2



TEK25

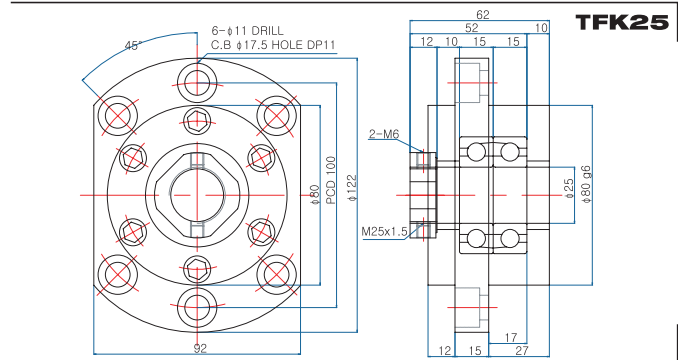
TEF25 Composition list		
부품명 Part Name	호칭 Model	수량 Q'ty
하우징 Housing	EF25	1
베어링 Bearing	6205ZZ	1
스냅링 Snap ring	φ25	1



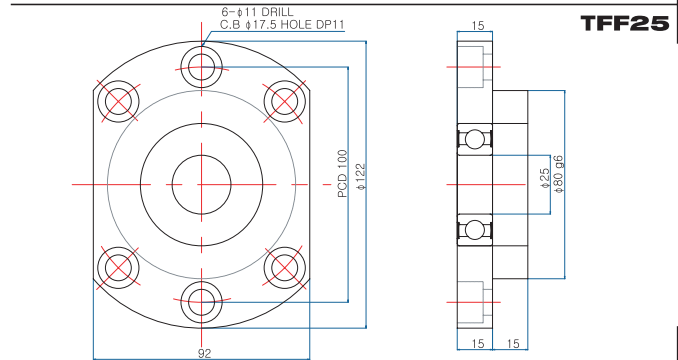
TEF25

φ25

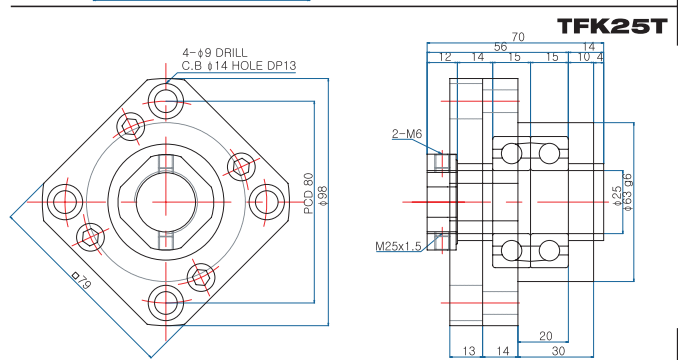
TFK25 Composition list		
부품명 Part Name	호칭 Model	수량 Q'ty
하우징 Housing	FK25	1
베어링 Bearing	7205BDFC7	1SET
칼라 Color	C25-10T	2
방진셀 Dust proof seal	#25	2
로코너트 Lock Nut	RN25	1
로코너트용 세트나사 Set screw for Lock Nut	M6x1	2



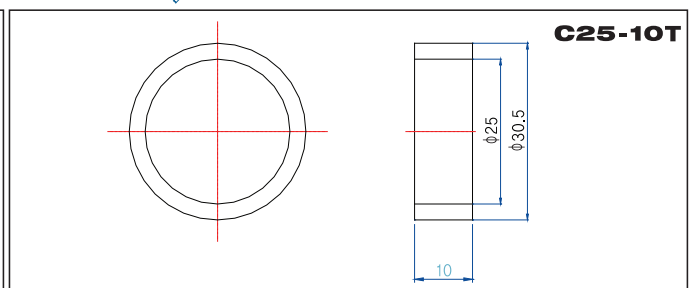
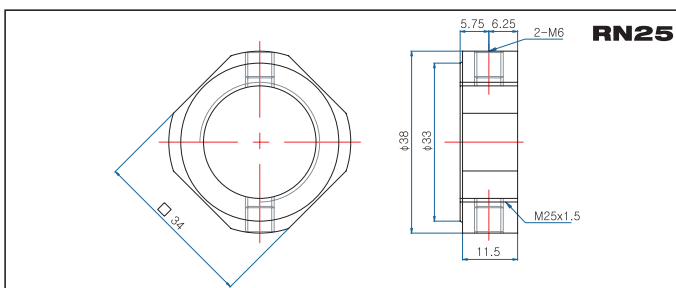
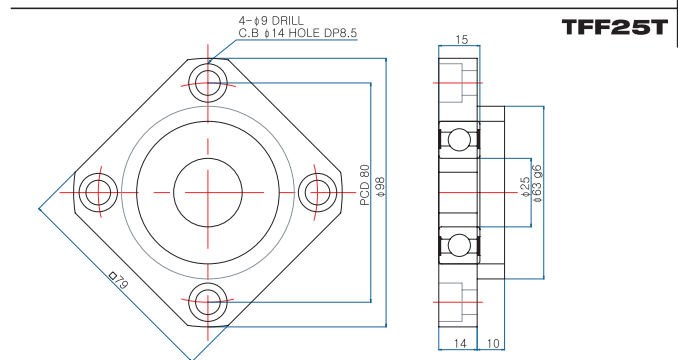
TFF25 Composition list		
부품명 Part Name	호칭 Model	수량 Q'ty
하우징 Housing	FF25	1
베어링 Bearing	6205ZZ	1
스냅링 Snap ring	φ25	1



TFK25T Composition list		
부품명 Part Name	호칭 Model	수량 Q'ty
하우징 Housing	FK25T	1
베어링 Bearing	7205BDFC7	1SET
칼라 Color	C25-10T	2
방진셀 Dust proof seal	#25	2
로코너트 Lock Nut	RN25	1
로코너트용 세트나사 Set screw for Lock Nut	M6x1	2



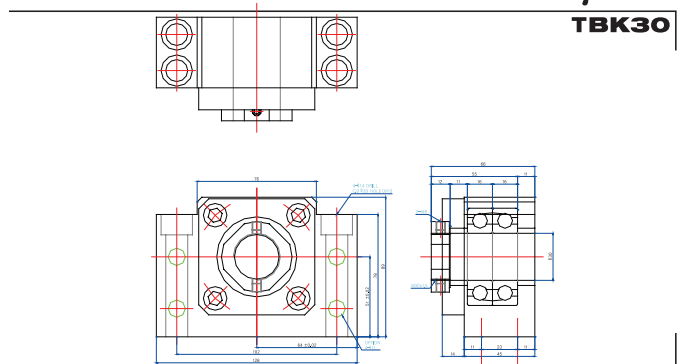
TFF25T Composition list		
부품명 Part Name	호칭 Model	수량 Q'ty
하우징 Housing	FF25T	1
베어링 Bearing	6205ZZ	1
스냅링 Snap ring	φ25	1



$\phi 30$

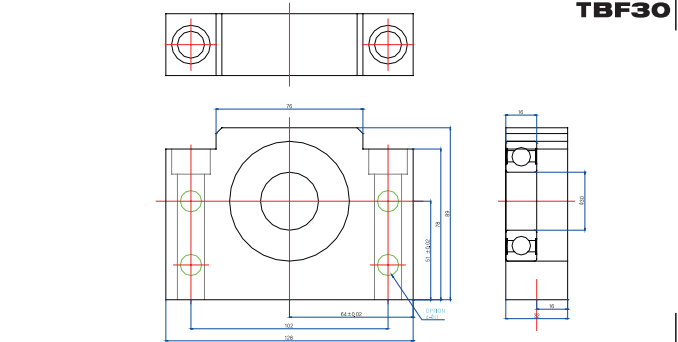
**TBK30**

<b>TBK30 Composition list</b>		
부품명 Part Name	호칭 Model	수량 Q'ty
하우징 Housing	BK30	1
베어링 Bearing	7206BDFC7	1SET
칼라 Color	C30-11T	2
방진씰 Dust proof seal	#30	2
로코너트 Lock Nut	RN30	1
로코너트용 세트나사 Set screw for Lock Nut	M6x1	2



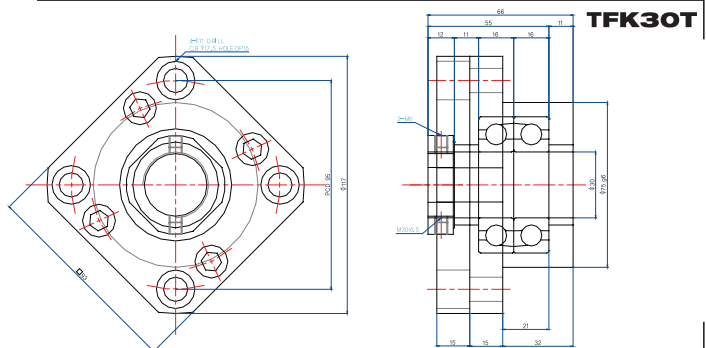
**TBF30**

<b>TBF30 Composition list</b>		
부품명 Part Name	호칭 Model	수량 Q'ty
하우징 Housing	BF30	1
베어링 Bearing	6206ZZ	1
스냅링 Snap ring	$\phi 30$	1



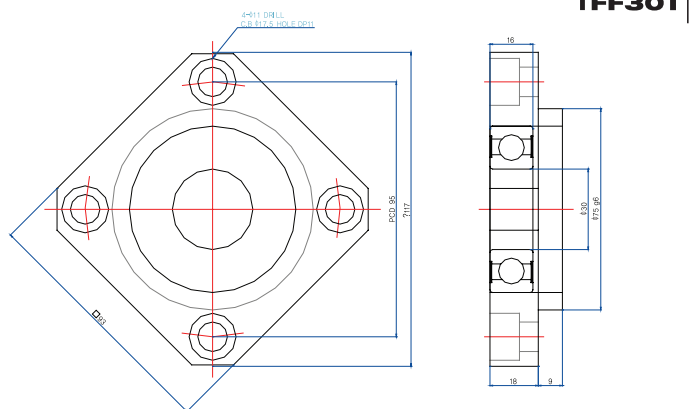
**TFK30T**

<b>TFK30T Composition list</b>		
부품명 Part Name	호칭 Model	수량 Q'ty
하우징 Housing	FK30T	1
베어링 Bearing	7206BDFC7	1SET
칼라 Color	C30-11T	2
방진씰 Dust proof seal	#30	2
로코너트 Lock Nut	RN30	1
로코너트용 세트나사 Set screw for Lock Nut	M6x1	2



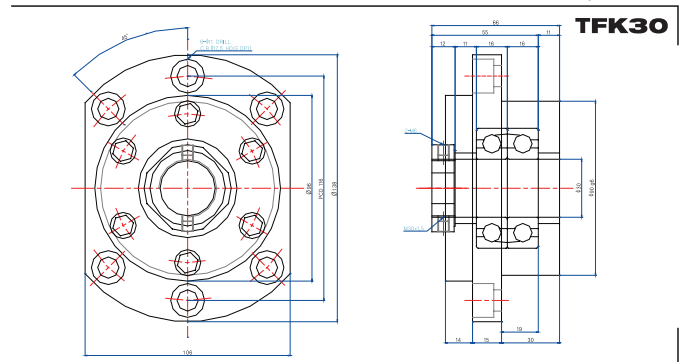
**TFF30T**

<b>TFF30T Composition list</b>		
부품명 Part Name	호칭 Model	수량 Q'ty
하우징 Housing	FF30T	1
베어링 Bearing	6206ZZ	1
스냅링 Snap ring	$\phi 30$	1

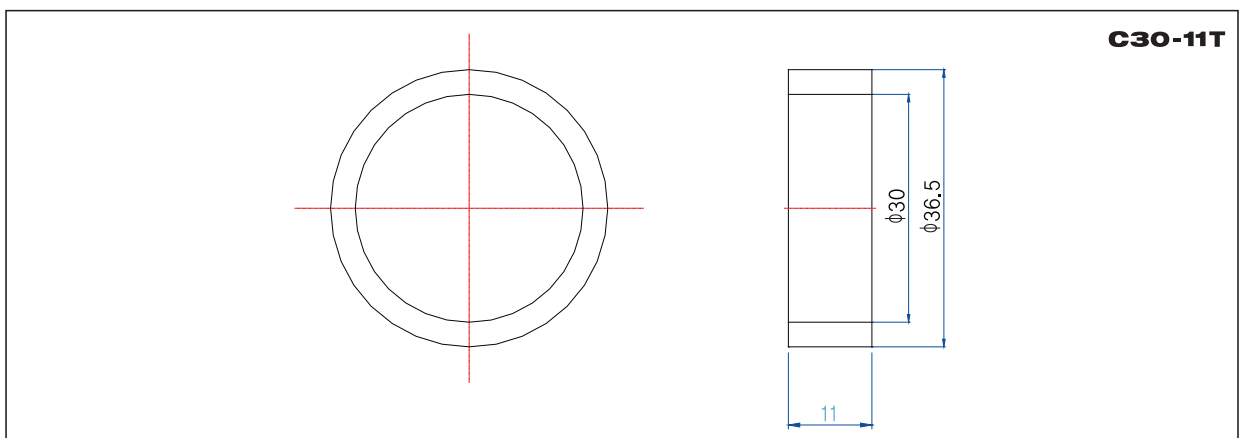
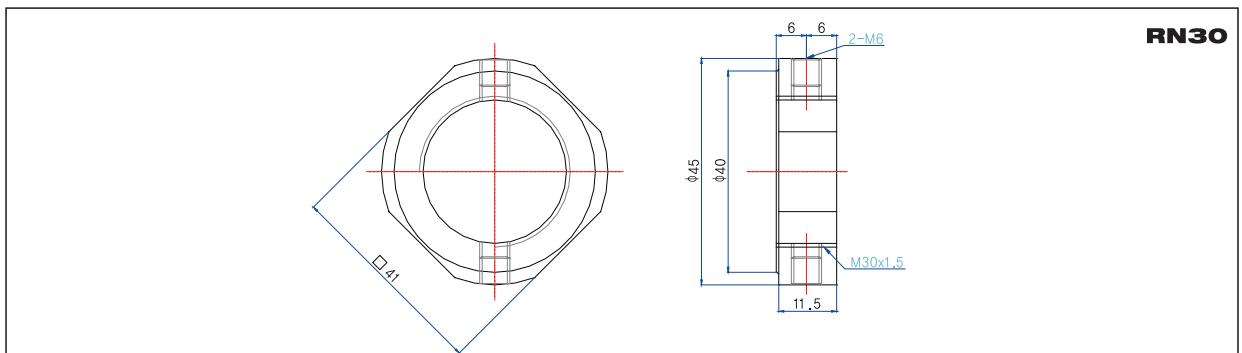
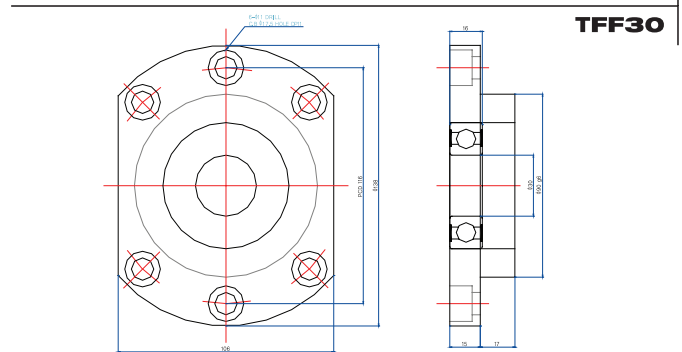


φ30

TFK30 Composition list			
부품명 Part Name	호칭 Model	수량 Q'ty	
하우징 Housing	FK30	1	
베어링 Bearing	7206BDFC7	1SET	
칼라 Color	C30-11T	2	
방진셀 Dust proof seal	#30	2	
로코너트 Lock Nut	RN30	1	
로코너트용 세트나사 Set screw for Lock Nut	M6x1	2	



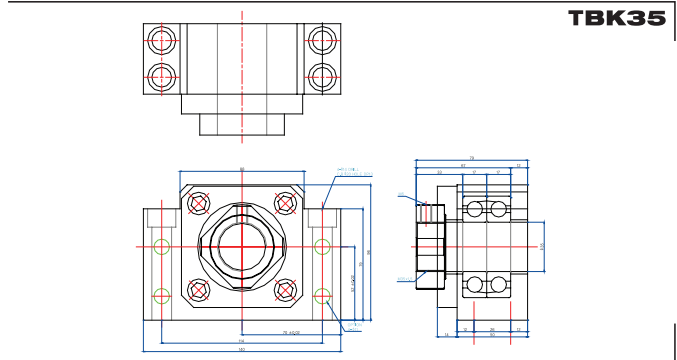
TFF30 Composition list			
부품명 Part Name	호칭 Model	수량 Q'ty	
하우징 Housing	FF30	1	
베어링 Bearing	6206ZZ	1	
스냅링 Snap ring	φ30	1	



φ35

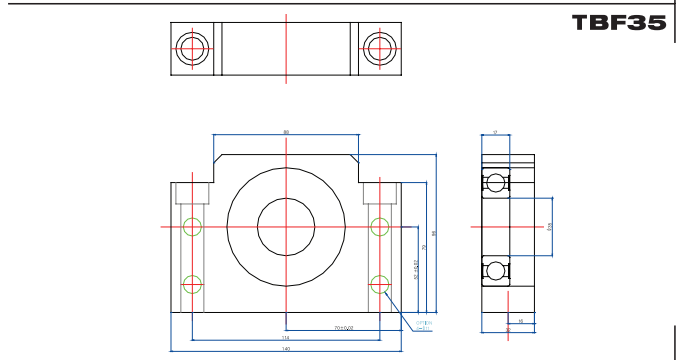
TBK35

TBK35 Composition list		
부품명 Part Name	호칭 Model	수량 Q'ty
하우징 Housing	BK35	1
베어링 Bearing	7207BDFC7	1SET
칼라 Color	C35-12T	2
방진씰 Dust proof seal	#35	2
로코너트 Lock Nut	RN35	1
로코너트용 세트나사 Set screw for Lock Nut	M6x1	2



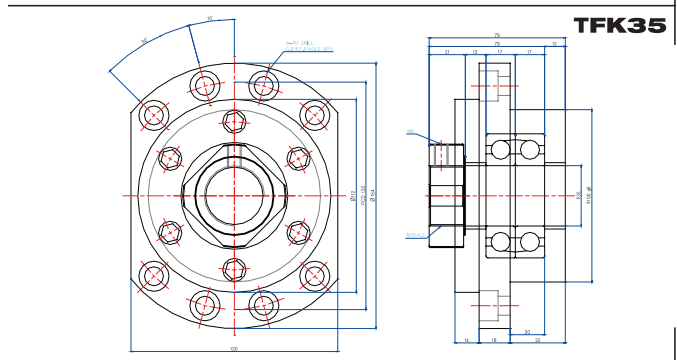
TBF35

TBF35 Composition list		
부품명 Part Name	호칭 Model	수량 Q'ty
하우징 Housing	BF35	1
베어링 Bearing	6207ZZ	1
스냅링 Snap ring	φ35	1



TFK35

TFK35 Composition list		
부품명 Part Name	호칭 Model	수량 Q'ty
하우징 Housing	FK35	1
베어링 Bearing	7207BDFC7	1SET
칼라 Color	C35-12T	2
방진씰 Dust proof seal	#35	2
로코너트 Lock Nut	RN35	1
로코너트용 세트나사 Set screw for Lock Nut	M6x1	2



TFF35

TFF35 Composition list		
부품명 Part Name	호칭 Model	수량 Q'ty
하우징 Housing	FF35	1
베어링 Bearing	6207ZZ	1
스냅링 Snap ring	φ35	1

